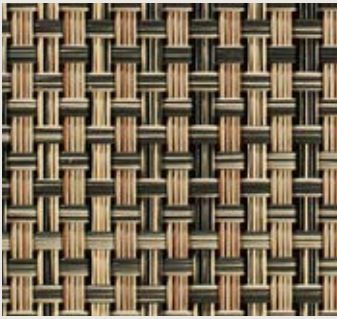


# Tiles and Planks





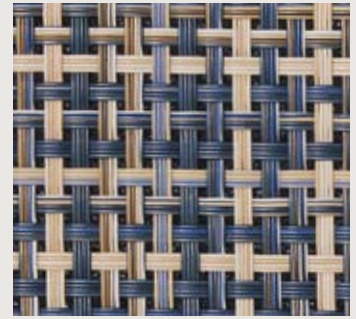
BASKETWEAVE, Bark



BASKETWEAVE, Buckwheat



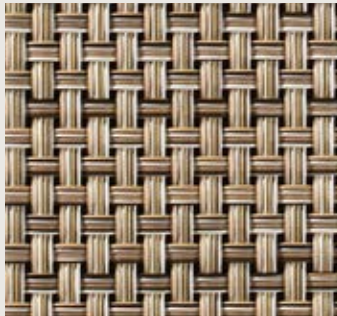
BASKETWEAVE, Carbon



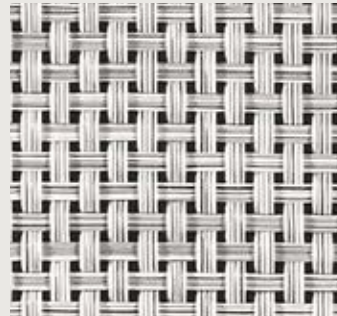
BASKETWEAVE, Coast - *NEW*



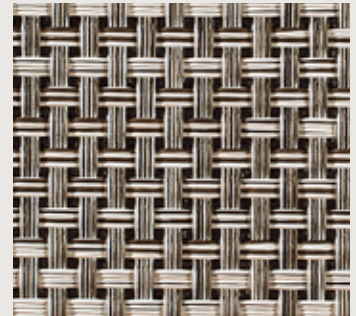
BASKETWEAVE, Earth



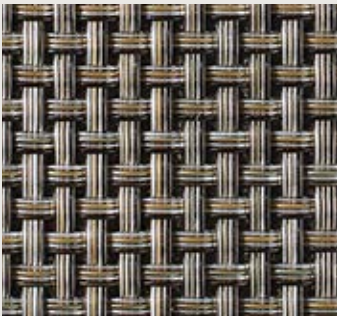
BASKETWEAVE, Latte



BASKETWEAVE, Marble



BASKETWEAVE, Oyster



BASKETWEAVE, Platinum



BOUCLÉ, Black Opal



BOUCLÉ, Black/White



BOUCLÉ, Blueberry



BOUCLÉ, Chiffon



BOUCLÉ, Cobblestone



BOUCLÉ, Coffee



BOUCLÉ, Fiesta



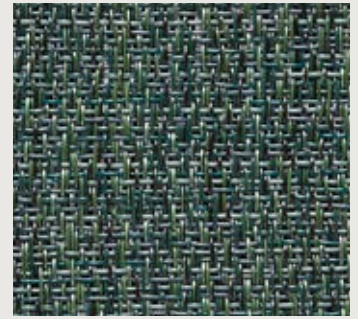
BOUCLÉ, Ginger



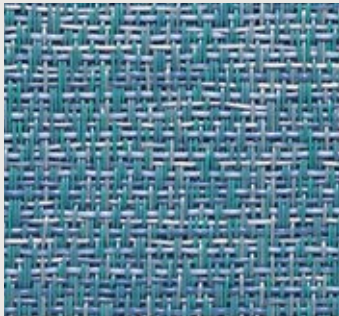
BOUCLÉ, Grey



BOUCLÉ, Ink



BOUCLÉ, Juniper



BOUCLÉ, Lagoon



BOUCLÉ, Lime



BOUCLÉ, Maple



BOUCLÉ, Marshmallow



BOUCLÉ, Mélange



BOUCLÉ, Moon



BOUCLÉ, Natural



BOUCLÉ, Newsprint



BOUCLÉ, Noir



BOUCLÉ, Pebble



BOUCLÉ, Rosé



BOUCLÉ, Salt



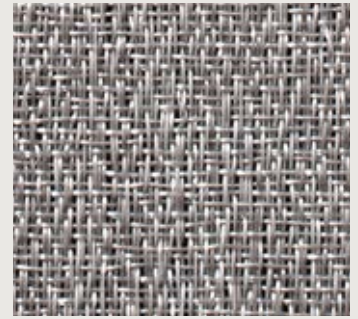
BOUCLÉ, Seaweed



BOUCLÉ, Shale



BOUCLÉ, Sisal



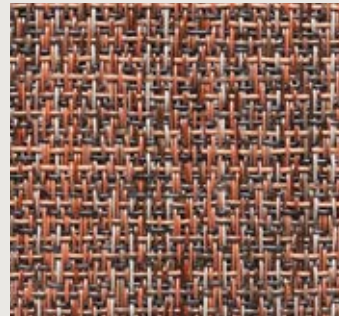
BOUCLÉ, Sterling



BOUCLÉ, Tangerine



BOUCLÉ, Tart



BOUCLÉ, Vermouth



CANE, Cacao



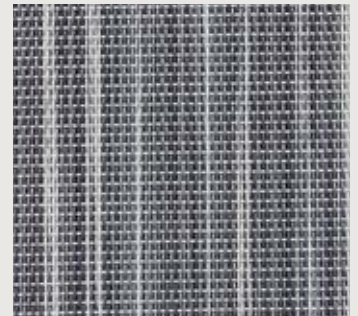
CANE, Crema



CANE, Harbor



CANE, Quarry



CHIME, Anchor



CHIME, Berry



CHIME, Biscotti



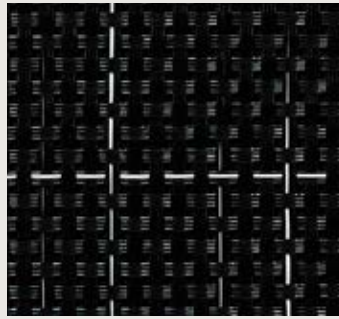
CHIME, Cerulean



CHIME, Zebra



DART, Midnight



DART, Onyx



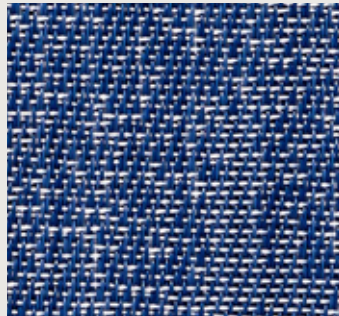
FRESCO, Concrete



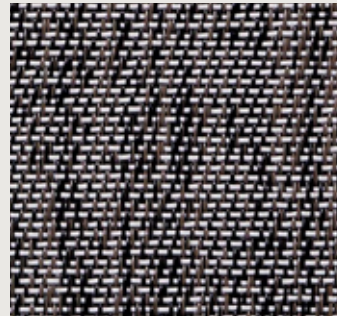
FRESCO, Obsidian



FRESCO, Sage



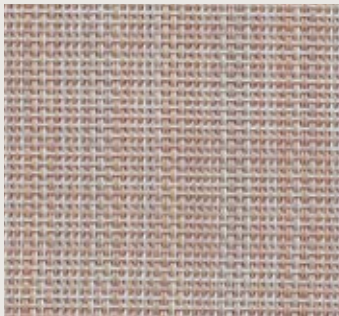
FRESCO, Sea Spray



FRESCO, Teak



IKAT, Bone



IKAT, Buff



IKAT, Cappuccino



IKAT, Cherry



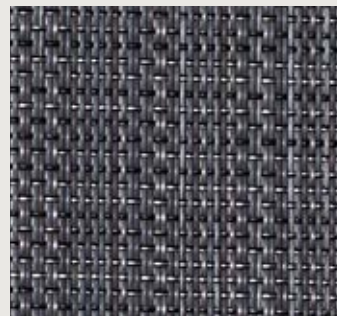
IKAT, Dark Green



IKAT, Deep Grey



IKAT, Fawn



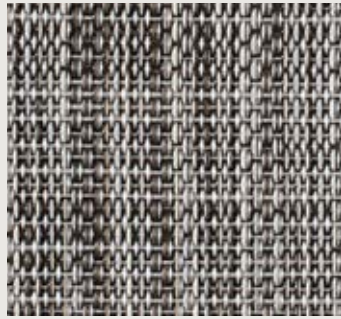
IKAT, Flint



IKAT, Gull Grey



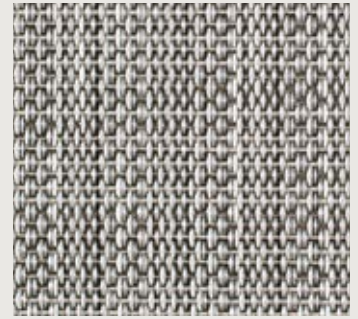
IKAT, Sea



IKAT, Tweed



IKAT, Walnut



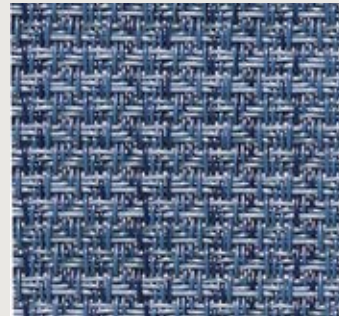
IKAT, White/Silver



LINK, Barley - *NEW*



LINK, Bluegrass - *NEW*



LINK, Cove - *NEW*



LINK, Meteor - *NEW*



LINK, Peony - *NEW*



LINK, Truffle - *NEW*



MOIRÉ, Mica - *NEW*



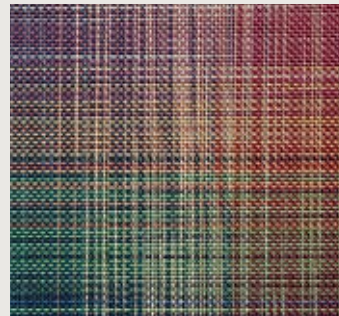
MOIRÉ, Mocha - *NEW*



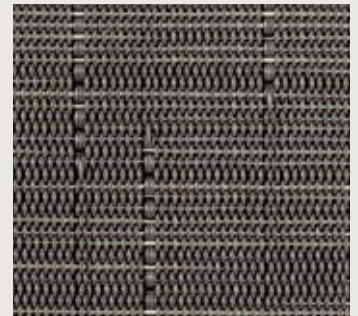
MOIRÉ, Zephyr - *NEW*



PLAID, Grey



PLAID, Multi



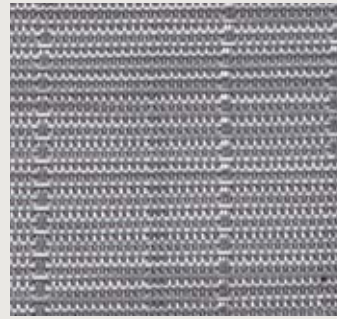
REED, Ash



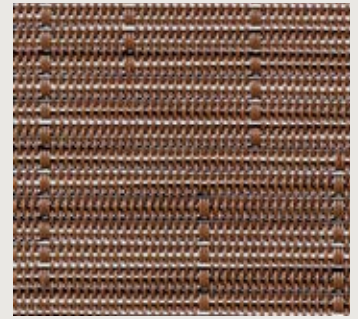
REED, Bisque



REED, Clove



REED, Herring



REED, Saddle



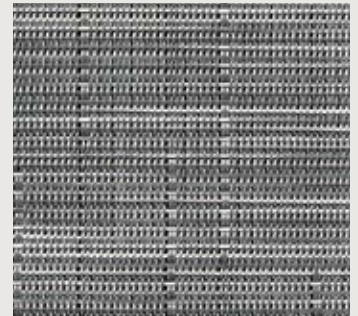
REED, Saltwater



REED, Sandbar



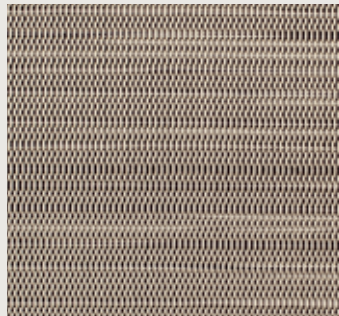
REED, Seashell



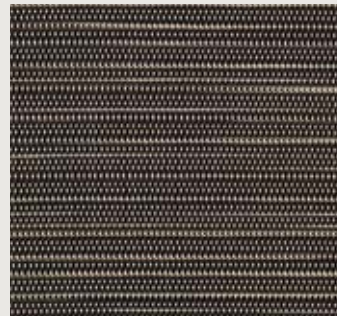
REED, Steel



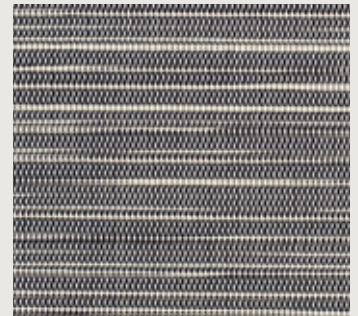
RIB WEAVE, Black



RIB WEAVE, Coconut



RIB WEAVE, Lead



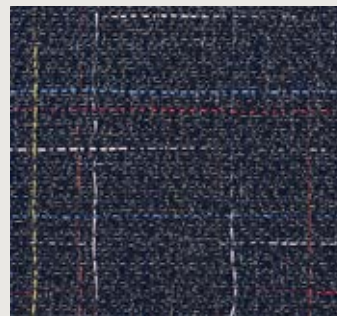
RIB WEAVE, Pearl



SAVILE, Cashmere



SAVILE, Charcoal



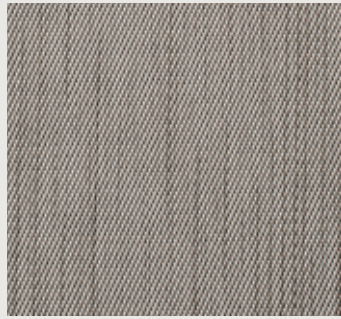
SAVILE, Dark Blue



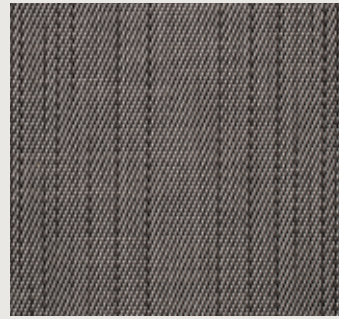
SAVILE, Parade



SAVILE, Walnut



SHADE, Birch



SHADE, Chrome



SHUTTLE, Balsa



SHUTTLE, Blackberry



SHUTTLE, Bluestone



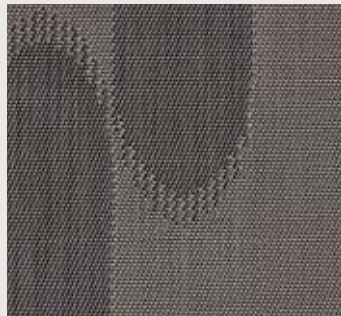
SHUTTLE, Copper



SHUTTLE, Greysand



SHUTTLE, Kale



SHUTTLE, Mink



SHUTTLE, Oleander



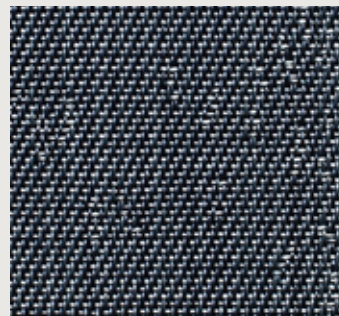
SHUTTLE, Orbit



SHUTTLE, Spearmint



SHUTTLE, Spruce

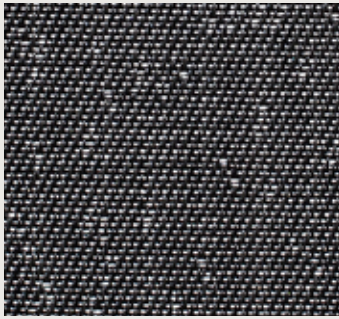


SPECKLE, Blue

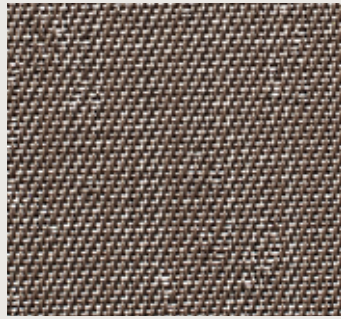


SPECKLE, Mercury





SPECKLE. Onyx



SPECKLE, Taupe



VESTIGE, Artichoke



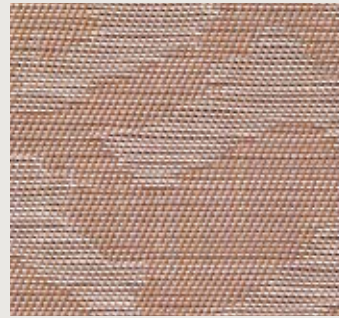
VESTIGE, Beech



VESTIGE, Cider



VESTIGE, Marine



VESTIGE, Pecan



VESTIGE, Tumbleweed

# Why Chilewich?

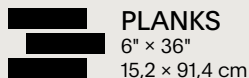
- DISTINCTIVE DESIGN.** Rich woven textures and multi-tonal colors.
- AMERICAN CRAFTSMANSHIP.** Made in the USA.
- DURABILITY.** Retains beautiful appearance over many years of daily use.
- SUSTAINABILITY.** Woven from phthalate-free, lead-free yarns that contain 20% renewable vegetable content.
- A BETTER BACKING.** BioFelt system made with post-consumer materials, including recycled bottles.
- EASY MAINTENANCE.** Vacuum regularly for peak condition. Spot clean as needed.
- MOISTURE MITIGATION.** BioFelt backing prevents stain and spill absorption.
- ANTIMICROBIAL PROTECTION.** Resistant to mold and mildew.
- NOISE ABATEMENT.** Helps to reduce reverberation while adding comfort underfoot.
- CUSTOM SIZES.** Made-to-order rugs ensure a perfect fit. No minimums.
- MODULARITY.** Easy to mix and match on floors, walls, windows, and beyond.
- GUARANTEED QUALITY.** Covered by warranty for fifteen years.

## Pourquoi Choisir Chilewich?

- DES MODÈLES UNIQUES.** Des textures tissées riches et des coloris aux tons multiples.
- SAVOIR-FAIRE AMÉRICAIN.** Fabriqué aux États-Unis.
- DURABILITÉ.** Garde sa beauté pendant de nombreuses années d'utilisation quotidienne.
- VIABILITÉ.** Tissé avec des fils sans phtalates et sans plomb contenant 20% de végétaux renouvelables.
- DE MEILLEURS SUPPORTS.** Le Système BioFelt est fabriqué à partir de matériaux recyclés, notamment des bouteilles plastiques (PET).
- ENTRETIEN FACILE.** Passer l'aspirateur régulièrement pour un état parfait. Nettoyer à la main au besoin.
- ATTÉNUATION DE L'HUMIDITÉ.** Sous couche BioFelt prévient les taches et l'absorption des éléments renversés.
- PROTECTION ANTIMICROBIENNE.** Résistance à la boue et à la moisissure.
- RÉDUCTION DU BRUIT.** Contribue à réduire la réverbération tout en offrant un confort accru.
- TAILLES PERSONNALISÉES.** Tapis réalisés sur commande pour une harmonie parfaite. Pas de taille minimale.
- MODULARITÉ.** Faciles à assortir sur les sols, les murs, les fenêtres et tout ce que vous souhaitez.
- GARANTIES.** Une garantie de 15 ans.
- POUR L'EUROPE.** Produits disponibles et expédiés depuis notre plateforme stockage à Barcelone (Espagne).



**TILES**  
18" x 18"  
45,7 x 45,7 cm



**PLANKS**  
6" x 36"  
15,2 x 91,4 cm

Chilewich  
39 West 19th Street, New York, NY 10011  
T +1 212 679 9204 / F +1 212 679 9205  
chilewichAD.com

Chilewich, EarthFelt, BioFelt, and TerraStrand are registered trademarks.  
© 2025 Chilewich | Sultan LLC. All rights reserved.

**FABRIC CONTENT – FIBERGLASS CORE (FG-Core)**  
TerraStrand®: 80% vinyl, 20% fiberglass  
(20% rapidly renewable content).  
Free of phthalates.

2025 COLLECTION  
chilewichAD.com

**FLAMMABILITY – FLOORING (TILES, PLANKS, ROLLS)**  
Class 1/Bfl-s1  
**USE CLASS – FLOORING (TILES, PLANKS, ROLLS)**  
Heavy commercial/33

**RECYCLED CONTENT – BIOFELT®**  
Post-consumer: Exceeds 19%  
Rapidly renewable: Exceeds 5%

**RECYCLED CONTENT - EARTHFELT™**  
Post-consumer: Exceeds 24%

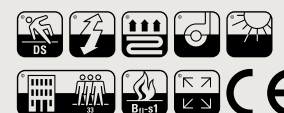
**ORGANIC CONTENT - EARTHFELT™**  
Rapidly renewable: Exceeds 11%



PROTECTION THAT LIVES ON  
**MICROBAN®** TerraStrand®



ACT® Registered Certification Marks



# Warum Chilewich?

- UNVERWECHSELBARES DESIGN.** Reichhaltige Webstrukturen und multitonale Farben.
- AMERIKANISCHE HANDWERKSKUNST.** Hergestellt in den USA.
- STRAPAZIERFÄHIGKEIT.** Behält sein schönes Aussehen auch nach jahrelangen täglichen Gebrauch.
- NACHHALTIGKEIT.** Gewebt aus phthalat- und bleifreien Garnen mit 20% erneuerbaren pflanzlichen Inhaltsstoffen.
- DER BESSERE RÜCKEN.** BioFelt-Rücken werden aus Post-Consumer-Materialien hergestellt, wie z.B. recycelten Wasserflaschen.
- EINFACHE PFLEGE.** Für die optimale Pflege regelmäßig staubsaugen. Fleckenreinigung nach Bedarf.
- FEUCHTIGKEITSREDUZIERUNG.** Der BioFelt-Rücken verhindert das Eindringen von Flecken und Flüssigkeiten.
- ANTIMIKROBIELLER SCHUTZ.** Beständig gegen Schimmelbildung.
- GERÄUSCHREDUZIERUNG.** Reduziert die Schallreflektion und fühlt sich bei jedem Schritt angenehm an.
- INDIVIDUELLE GRÖSSEN.** Maßgeschneiderte Teppiche sorgen für ein perfektes Ambiente. Kein Minimum erforderlich.
- MODULARITÄT.** Einfach kombinierbar auf Fußböden, an Wänden, Fenstern und mehr.
- GARANTIERTE QUALITÄT.** Abgesichert durch die fünfzehnjährige Garantie.
- EUROPA.** Artikel sind lokal verfügbar und werden über das Lager in Barcelona, Spanien, ausgeliefert.

## ¿Por Qué Chilewich?

- DISEÑO INCONFUNDIBLE.** Ricas texturas tejidas y colores multitonales.
- ARTESANÍA ESTADOUNIDENSE.** Fabricada en EE. UU.
- DURABILIDAD.** Conserva un aspecto bonito al cabo de muchos años de uso diario.
- SOSTENIBILIDAD.** Tejida con hilos sin falatos ni plomo con un 20% de contenido vegetal renovable.
- MEJOR BASE.** Sistema BioFelt elaborado a partir botellas de agua recicladas.
- FÁCIL MANTENIMIENTO.** Aspirar con frecuencia para mantenerla en perfectas condiciones. Limpiar las manchas cuando sea necesario.
- REDUCCIÓN DE HUMEDAD.** La base BioFelt evita la absorción de manchas y vertidos.
- PROTECCIÓN ANTIMICROBIANA.** Resistente al moho y a los hongos.
- REDUCCIÓN DEL RUIDO.** Ayuda a reducir la reverberación y aumenta la comodidad de la pisada.
- TAMAÑOS PERSONALIZADOS.** Las alfombras fabricadas a medida garantizan a medida perfecta. Sin requisitos mínimos.
- MODULARIDAD.** Fácil de combinar con suelos, paredes, ventanas y demás.
- CALIDAD GARANTIZADA.** Garantía de 15 años.
- POR EUROPA.** Producto disponible y que puede ser enviado desde nuestro almacén en Barcelona, España.