

# Alfresco Appeal

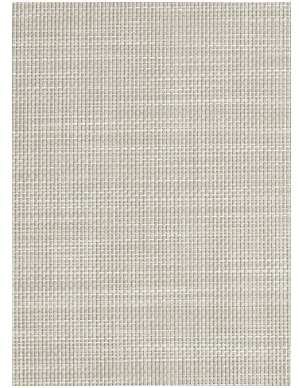
Get outdoor dining squared away safely with our new 6×6 floor mats.



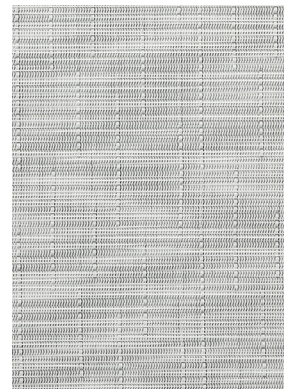
CLOUD, Reed



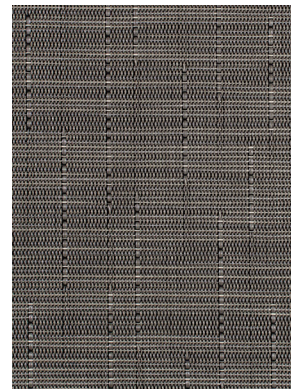
STERLING, Bouclé



PARCHMENT, Mini Basketweave



CLOUD, Reed



ASH, Reed

As the hospitality world reopens, outdoor seating is giving operators flexibility and patrons peace of mind. Our new floor mats are designed to enhance outdoor dining. At six feet (1.83 meters) square, these durable rugs can demarcate safe space—in patios and parking lots, on sidewalks and streets, and beyond. Plus, their sleek woven surfaces allow them to transition easily to indoor environments.

**Beautiful.** Choose from a selection of our most popular weaves in four versatile colorways: Bouclé in Sterling, Mini Basketweave in Parchment, Reed in Cloud, or Reed in Ash.

**Antimicrobial.** Integrated Microban technology protects our textiles from stain- and odor-causing bacteria, mold, and mildew for the lifetime of the product.

**Easy to maintain.** Clean-up is easy. Sweep or vacuum to remove loose dirt or wipe clean with soap and water using a mop, sponge, or cloth.

**Bleach cleanable.** A 1:50 diluted solution of household bleach is recommended for disinfection or sterilization. As an alternative to bleach, hydrogen peroxide may be used.

**Durable.** Our mats retain their distinctive colors and rich textures over many years of use, outdoors or indoors.

**Slip resistant.** A backing of commercial-grade latex keeps our woven floor mats in place. No rug pad required.

**Crushproof.** Tables, chairs, and foot traffic are no match for these low-profile mats.

**Refined look.** Made in the USA, each woven floor mat is finished with self-bound edges.

**Better for people and the planet.** Our phthalate-free extruded yarns use vegetable-based compounds in place of petroleum-based plasticizers, and all of our products contain at least 17% rapidly renewable content.