

A+D Collection

Bringing depth to surfaces.

Chilewich A+D provides design solutions for floors, walls, windows, and upholstery to architects and designers worldwide. Made in the United States, our products combine innovative weaves and a distinctive color palette with proven durability, easy maintenance, bleach cleanability, and a warranty of up to 15 years.

chilewichAD.com

Contents

| | | | |
|-----------|---------------------------------------|------------|-------------------------------|
| 4 | Applications | 74 | Hospitality |
| | | 76 | Hotel Duca |
| 6 | Corporate | 78 | Laity Lodge |
| 8 | Couture House | 79 | Shade Hotel |
| 12 | Consulting Firm | 81 | Hotel Explora |
| 14 | EST | 82 | Crown Metropol Hotel |
| 16 | Analog Devices World Headquarters | 85 | Moments Together Restaurant |
| 20 | NCARB | 86 | Le Katz Restaurant |
| 22 | Pharmaceutical Corporation | 90 | Cooper's Hawk |
| 24 | Hearst | 92 | Boro Hotel |
| 26 | Simplex | 93 | Peel Pizza |
| 28 | Boston Consulting Group | | |
| 30 | Supergoop! | 94 | Multifamily |
| 34 | Dova-Crow | 96 | The Courts at Dulles |
| | | 100 | 1 Vernon Jackson Condominiums |
| 36 | Education & Cultural | 101 | Inwood at Renaissance Square |
| 38 | High Point University | | |
| 40 | Yale University | 102 | Retail |
| 42 | Doylestown United Methodist Church | 104 | Coffignon Optique |
| 44 | Santa Clara University | 108 | Loeffler Randall |
| | | 110 | Fifty One East |
| 46 | Fitness & Spa | | |
| 48 | 1800 K Street Gym | | |
| 50 | OceanFirst Bank | | |
| 52 | Campus Pointe | | |
| 54 | Yoga Studio | | |
| 56 | Serenity Residence | | |
| 58 | Healthcare & Senior Living | | |
| 60 | La Vie la Bella des Croisettes | | |
| 66 | Golda Meir House | | |
| 70 | The Covington Retirement Community | | |
| 72 | Casa de Mañana Retirement Community | | |

Applications



Tiles and Planks

Modular 18" (45.7 cm) square Tiles or 6" x 36" rectangular Planks (15.2 x 91.4 cm) are made of Chilewich signature woven textiles bonded either to BioFelt® — an innovative felt and vinyl backing system—or to a vinyl backing system. Chilewich has been granted U.S. Patent 7,326,661 for these innovative tiles.

BioFelt® backing is recommended for use in commercial, retail, healthcare, and hospitality environments. Installed with adhesives, BioFelt® offers cushioning underfoot while providing a waterproof layer of protection against stains and spills, making it easier to clean and quicker to dry. The post-consumer recycled content of BioFelt®-backed tiles exceeds 27%.

Vinyl backing is recommended in areas with heavy rolling traffic and for fitness and outdoor applications.



Wall Textiles

Extraordinarily durable, Chilewich Wall Textiles are classified as Type III wall protection. They offer designers a way to reimagine vertical surfaces and are unique in their ability to coordinate with Chilewich floor coverings. They are used extensively for healthcare, hospitality, fitness, and multi-family properties as well as projects that require more durable and easy-to-maintain wall treatments.

Rolls

Designed for wall-to-wall use, Rolls are made of Chilewich signature woven textiles bonded either to BioFelt® — an innovative felt and vinyl backing system—or to a vinyl backing system.

BioFelt® backing is recommended for use in commercial, retail, healthcare, and hospitality environments. The post-consumer recycled content of BioFelt®-backed rolls exceeds 27%.

Vinyl backing is recommended in areas with heavy rolling traffic and for fitness and outdoor applications.



Upholstery Fabric

Chilewich Upholstery Fabric is designed to provide versatility, durability, and ease of maintenance. Used to enhance a broad variety of furnishings and surfaces, these textiles add color and texture through their unique weave construction. Suitable for indoor and outdoor use.

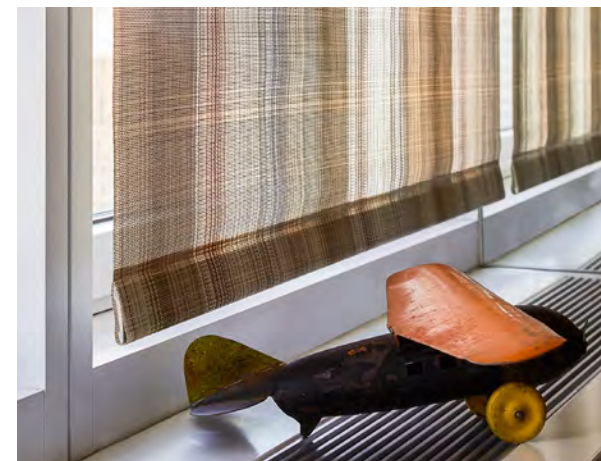


Rugs

Suitable for indoor and outdoor use, Rugs are made of Chilewich signature woven textiles bonded to a flexible latex underlayer. This durable, commercial-grade backing helps to protect the floor while providing enhanced slip resistance and increased comfort underfoot.

Rugs are finished with self-bound edges. Made by folding the face fabric over the edge of the mat and sewing it into place, this unique finishing step provides a clean look.

Custom sizes are available in all weaves.



Window Coverings

Chilewich signature woven textiles are available as roller shades and panel systems. With their shimmering, multi-tonal colors, the collection's distinctive weaves enhance windows in residential and commercial settings.

Corporate

Selected Projects

| | | |
|--|--------------------------|---------------------------|
| AT&T | Exelixis | Ogilvy |
| Amazon | Experian Consumer Direct | Paramount |
| American Society of Interior Designers | ExxonMobil | Paul Hastings |
| Analog Devices World Headquarters | GlaxoSmithKline | PwC |
| Anthem Worldwide | Goldman Sachs | Rogers |
| Armani | HBO | Samsung |
| Bain Capital | Hearst | Santander Bank |
| Bank of America | Herman Miller | Serenity Residence |
| Boeing | Hudl | Seyfarth Shaw |
| Boston Consulting Group | The Knot | Simplex |
| BoyarMiller | LVMH | Sky Group |
| Bristol Myers Squibb | LinkedIn | Southwest Power and Light |
| CMS | Lockheed | Spectrum |
| CenterPoint Energy | MTV | Supergoop! |
| Chanel | McGraw Hill | Texas Instruments |
| Chubb | Merit Energy Company | Thomson Reuters |
| Citigate First Financial | Microsoft | Top Golf |
| Comcast | Moderna | Trump Tower |
| Connell Foley | Morgan Stanley | Unilever |
| Couture House | Nationwide | Verizon |
| Deloitte | NBC | Veterans Benefits |
| Dimensional Fund Advisors | NCARB | Administration |
| Dova-Crow | Nike | Wells Fargo |
| Edward Jones | Nintendo of America | Westfield Insurance |
| Ekimetrics | Nissan | WW International |
| Eli Lilly | Northrup Grumman | |
| EST | NVIDIA | |



Tiles in NEWSPRINT and NOIR, Bouclé™
Couture House, Paris, France
Photo: Serge Brison



Opposite: Tiles in BLACK/WHITE, Bouclé™
Above: Tiles in NEWSPRINT and NOIR, Bouclé™
Couture House, Paris, France
Photos: Serge Brison



Tiles in MARBLE, Basketweave™
Consulting Firm, USA
Photo: Garret Rowland
Design: Gensler



Tiles in TEAK, Fresco™
EST, Melissa, TX, USA
Photos: Matthew Niemann



Tiles in BLUEBERRY, Bouclé™
Analog Devices World Headquarters, Wilmington, MA, USA
Photo: Robert Benson Photography
Design: Baker Design Group



Tiles in BLUEBERRY, Bouclé™
Analog Devices World Headquarters, Wilmington, MA, USA
Photos: Robert Benson Photography
Design: Baker Design Group




Wall Textiles in LAGOON, Bouclé™
NCARB, Washington, DC, USA
Design: OTJ Architects



Opposite: Rolls in LATTE, Basketweave™
Above: Tiles in LATTE, Basketweave™
Pharmaceutical Corporation, USA
Photos: Halkin | Mason Photography
Design: Granum A / I



 Rolls in BIRCH, Shade™
Hearst, New York, NY, USA
Photos: Adrian Wilson



Wall Textiles and Tiles in TEAK, Fresco™
Simplex, Chicago, IL, USA
Photo: Arthur Garcia-Clemente / AKGO Designs Inc.
Design: Partners by Design



Wall Textiles in CARBON, Basketweave™
Boston Consulting Group, Seattle, WA, USA
Photo: Spencer Lowell
Design: SkB Architects



Custom Rug in BLUE, Wave™
Location: Supergoop!, New York, NY
Office Design: Collected Design Studio
Photo: © Jane Beiles



Custom Rug in BLUE, Wave™
Location: Supergoop!, New York, NY
Office Design: Collected Design Studio
Photo: © Jane Beiles



Tiles in WALNUT, Ikat™
Dova-Crow, Utrecht, The Netherlands
Architect: Studio Frits
Photos: Jurrian Neijenhuis

Education & Cultural

Selected Projects

American Folk Art Museum
Amsterdam Business School
The Art Institute of Chicago
Calvary Baptist Church
Christian Stronghold
Doylestown United Methodist Church
High Point University
Medical University of South Carolina
American Indian Hall, Montana State University
Ocean City Tabernacle

Rosa F. Keller Library & Community Center
Santa Clara University
The Rubin Museum of Art
University of British Columbia
University of Amsterdam
University of Iowa
University of San Francisco
The University of Massachusetts Lowell
Victory Church
Yale University



Choose to be Extraordinary!™



Rolls in MULTI, Plaid™
Caffey Hall, High Point University, High Point, NC, USA
Photos: DesiLu Photography
Design: Barbour Spangle Design



Tiles in GREY, Bouclé™
Kroon Hall, Yale University, New Haven, CT, USA
Photos: Paul S. Bartholomew
Design: Hopkins Architects and Centerbrook Architects and Planners



Rolls in DARK GREEN, Ikat™
Doylestown United Methodist Church, Doylestown, PA, USA
Design: ChurchArchitects



Tiles in BIRCH, Shade™ and CHERRY, Ikat
The Sobrato Campus for Discovery and Innovation,
Santa Clara University, Santa Clara, CA USA
Design: ZGF
Photos: Bruce Damonte

Fitness & Spa

Selected Projects

1800 K Street
Andaz Wall Street
Argento
Bliss
Campus Pointe
David Barton Gym
Equinox
Exhale Miami Beach
Galaxy Fitness Center
Hilton
Hyatt
IAC Santa Clara
Le Méridien

MGM Resorts
Marriott
MGM Resorts
OceanFirst Bank
Peloton
Serenity Residence
Sloan's Curve Condos
The Ritz-Carlton, Montreal
The Sagamore Resort
Trump Tower
Wolff Grand Prairie
YMCA
Yoga Studio



Rolls in TWEED, Ikat™
1800 K Street Gym, Washington, DC, USA
Design: VOA Associates / Stantec
Photos: MP Commercial Photography



Tiles in GREY, Plaid™, MARBLE, Basketweave™, TWEED, Ikat™, and ONYX, Speckle™
OceanFirst Bank, NJ, USA
Design: SOSH Architects
Photos: Commercial Flooring & Interior Concepts



Rug in CHALK, Bamboo™
Campus Pointe, San Diego, CA, USA
Photo/Design: Facility Solutions



Rolls in BARK, Basketweave™
Yoga Studio, OH, USA
Photo/Design: Source One Contract



Tiles in PLATINUM, Basketweave™
Serenity Residence, Indian Wells, USA
Architect: Whipple Russell Architect
Photo: William MacCollum

Healthcare & Senior Living

Selected Projects

Allegro Senior Living
Bishop Gadsden
Casa de Mañana Retirement Community
Centurion Physical Therapy
The Covington Retirement Community
Crossover Health
East Valley Urology
Golda Meir House
Hospital for Special Surgery
National Institutes of Health
North Kansas City Hospital
Norton Children's Hospital
NYU Langone Health
Sage Senior Living
South Shore Hospital
UCLA Medical Center
La Vie la Bella des Croisettes
Virtua Health System



Tiles in SALT and GREY, Bouclé™ and DEEP GREY, Ikat™
La Vie la Bella des Croisettes, Semur-en-Auxois, France
Design: Hannah Elizabeth Design
Photo: Jérémie Blancféné



Tiles in SALT and GREY, Bouclé™ and DEEP GREY, Ikat™
La Vie la Bella des Croisettes, Semur-en-Auxois, France
Design: Hannah Elizabeth Design
Photo: Jérémie Blancféné



Tiles in SALT and GREY, Bouclé™ and DEEP GREY, Ikat™
Vie la Bella des Croisettes, Semur-en-Auxois, France
Design: Hannah Elizabeth Design
Photo: Jérémie Blancféné



Tiles in LATTE, Basketweave™
Golda Meir House, Newton, MA, USA
Design: Stefura Associates



Tiles in LATTE, Basketweave™
Golda Meir House, Newton, MA, USA
Design: Stefura Associates



Tiles in SANDBAR, Reed™, WALNUT, Ikat™
The Covington Retirement Community, Aliso Viejo, CA
Design: Castle Rock Design Group, Inc.
Photos: Baxter Imaging




Tiles in WALNUT, Ikat™, SISAL, Bouclé™
Casa de Mañana Retirement Community,
La Jolla, CA
Design: Castle Rock Design Group, Inc.
Photos: Baxter Imaging

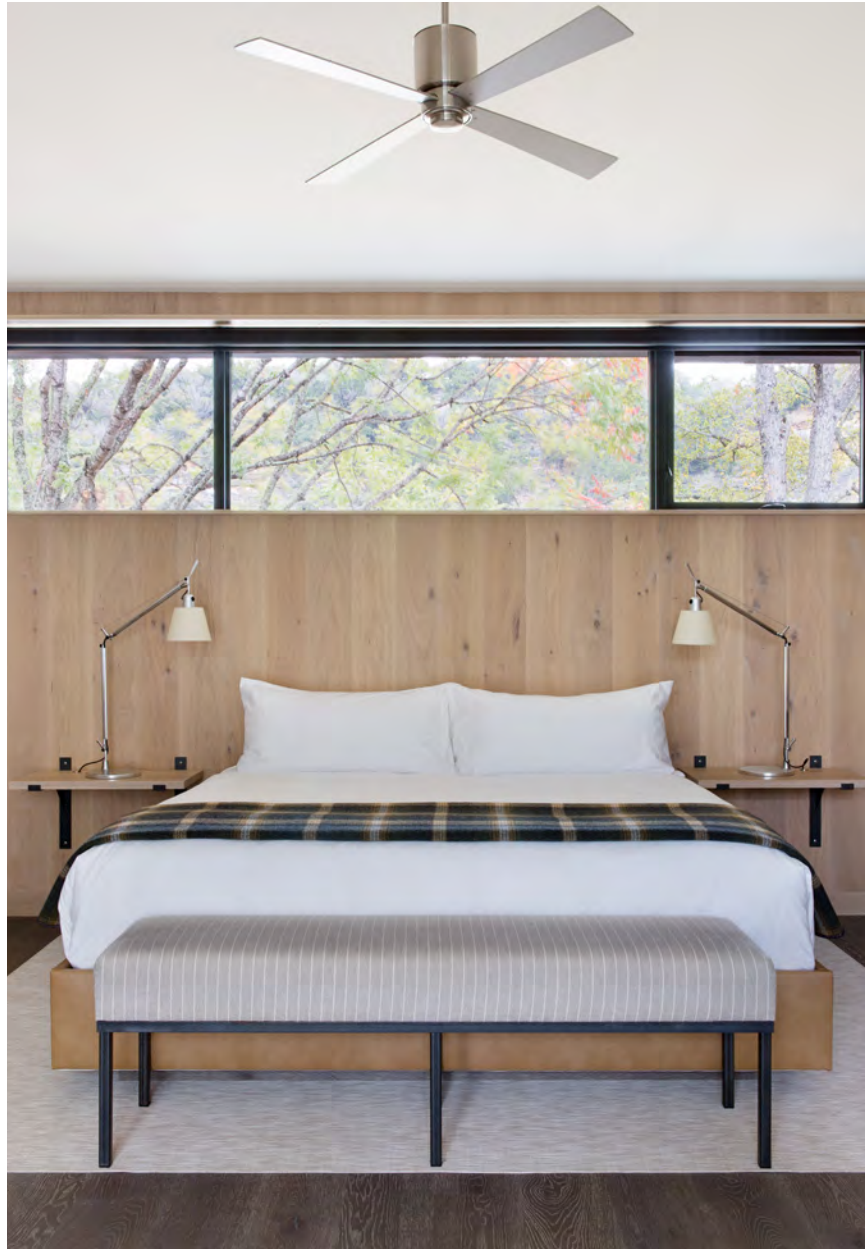
Hospitality


Selected Projects

Accor
Armani Hotel Dubai
Aulani, Disney Resort & Spa
Bel Air Plaza
The Beverly Hilton
Boca Beach Club
Borgata Hotel, Casino, and Spa
Boro Hotel
Club Med
Cooper's Hawk
Coronado Island Marriott Resort & Spa
Crown Metropol Melbourne
Delano Las Vegas
Encore at Wynn Las Vegas
Equinox Hotels
The Fairmont Chicago
Four Seasons Hotels & Resorts
Gansevoort Hotel Group
Grand Cayman
Hard Rock Hotels
Hilton Hotels
Hotel Duca
Hotel Explora
Hyatt Hotels & Resorts
La Quinta Hotels
Le Katz Restaurant
Laity Lodge
The Mirage Las Vegas
Marriott Hotels
Meliá Hotels International
Miro Towers
Moments Together
Novotel
Omni Hotels & Resorts
Peel Pizza
Residence Inn Fairfax
The Ritz-Carlton Residences at LA Live
Ruth's Chris
The Setai Hotels
Shade Hotel
Sheraton Hotels & Resorts
SLS Hotels & Residences
Surfjack Hotel & Swim Club
TownePlace Suites
Urban Nature
V Palm Springs
W Hotels
Westin Hotels & Resorts
Wyndham Grand Rio Mar
Wynn Las Vegas



 Rolls in GREY, Bouclé™
Hotel Duca, Milan, Italy



 Rug in BONE, Ikat™
Laity Lodge, Leakey, TX, USA
Photo: Molly Culver



 Upholstery Fabric in GREY FLANNEL, Bamboo™
Shade Hotel, Redondo Beach, CA, USA
Photo: Patrick Record



■
Rugs in OYSTER, Basketweave™
Hotel Explora, Valle Sagrado, Peru
Photos: Roland Halbe
Design: José Cruz Ovalle Estudio de Arquitectura



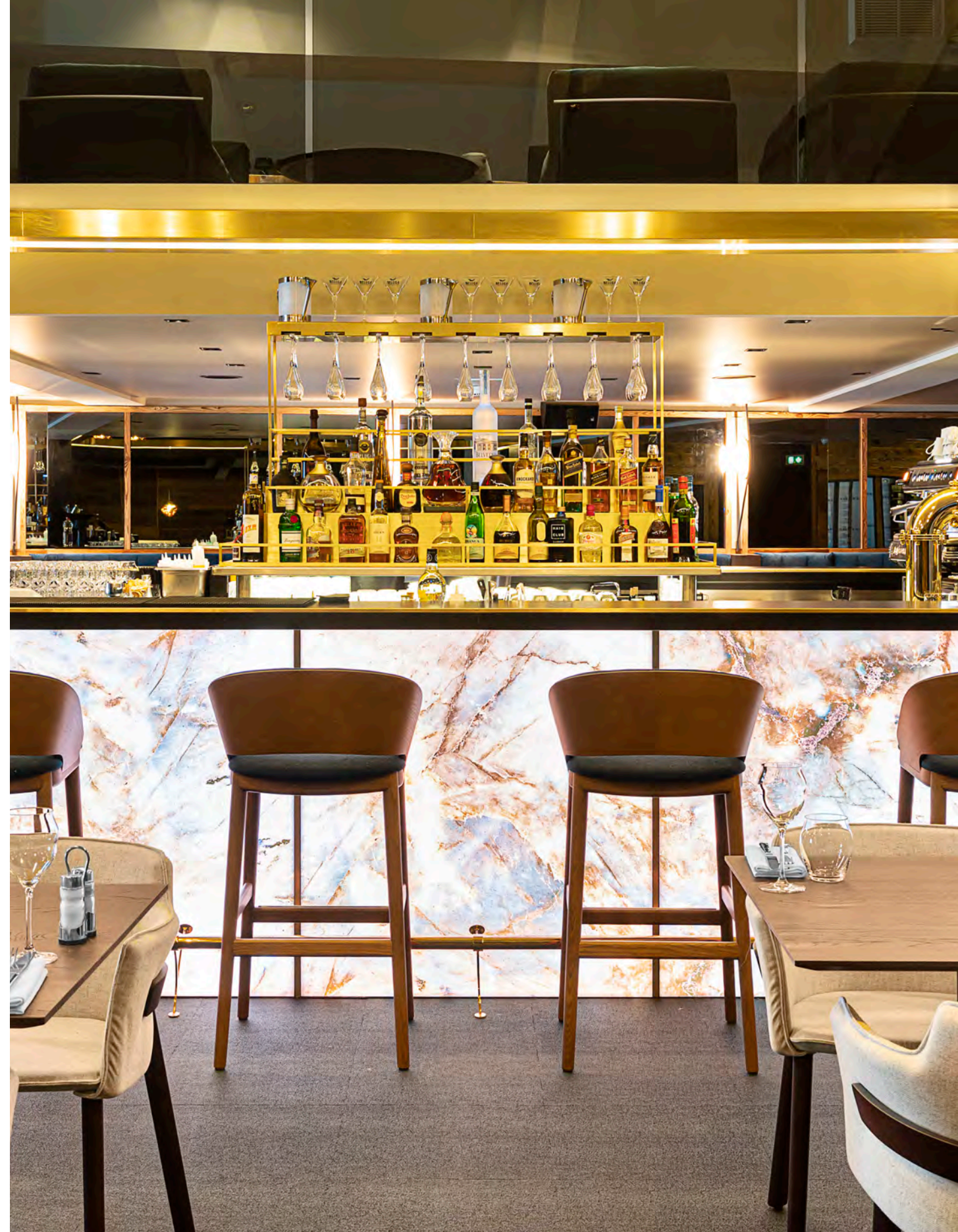
Wall Textiles in CARBON, Basketweave™
Crown Metropol Hotel, Melbourne, Australia
Photos: Crown Metropol



Rolls in MULTI, Plaid™
Moments Together Restaurant, Kowloon, Hong Kong
Photos: Steven Ko Interior Photography
Design: Minus Workshop



Tiles in COFFEE, Bouclé™
Le Katz Restaurant at The Chabichou Hotel & Spa, Savoie, France
Photo: Florian Peallat



Tiles in COFFEE, Bouclé™
Le Katz Restaurant at The Chabichou Hotel & Spa, Savoie, France
Photo: Florian Peallat



Opposite: Wall Textiles in DARK WALNUT, Mini Basketweave™
Above: Wall Textiles in CHALK, Bamboo™
Cooper's Hawk, Kentwood, MI, USA
Photos: Brian Kelly
Design: Aria Group



Rolls in DARK BLUE, Savile™
Temporary installation, Boro Hotel, Long Island City, NY, USA




Wall Textiles in GREY, Plaid™
Peel Pizza, St. Louis, MO, USA
Photo: Jeff Wellman
Design: Gray Design Group

Multifamily

Selected Projects

1 Vernon Jackson Condominiums
440 Penn
Ballston Point
The Courts at Dulles
Inwood at Renaissance Square
Modera New Rochelle
Revelstoke




 Planks in OYSTER, Basketweave™
The Courts at Dulles, Herndon, VA, USA
Photo: Ron Solomon
Design: GTM Architects




Above: Tiles in GREY, Plaid™
Opposite: Planks in OYSTER, Basketweave™
The Courts at Dulles, Herndon, VA, USA
Photo: Ron Solomon
Design: GTM Architects



 Wall Textiles in CHALK, Bamboo™
1 Vernon Jackson Condominiums, Long Island City, NY, USA
Photo: Elizabeth Felicella



 Tiles in PEARL, Rib Weave™
Inwood at Renaissance Square, Marlton, NJ, USA
Design: Minnowasko
Photo: Ira Wexler

Retail

Selected Projects

Abercrombie & Fitch
Armani
Aveda
Bebe
Bloomingdale's
Chanel
Charlotte Russe
Citroën
Clarke Showrooms
Coffignon Optique
Daltile Showrooms
Dior
Dirtt Environmental Solutions
Duxiana
DWR
Fifty One East
Furla
Harrys of London
Harvey Nichols

Intersport
Kenzo
LF Corp
Loeffler Randall
Longchamp
Louis Vuitton
Macy's Herald Square
Michael Kors
Michael Stars
Moncler
Neiman Marcus
Nespresso
Nordstrom
Potted
Scoop
Starbucks
Vince
Westfield
Yankee Candle



Tiles in BARK, Basketweave™
Coffignon Optique, Paris, France
Photo: © HESTIA Photo
Design: Ségolène Toussaint Architecte



■
Tiles in BARK, Basketweave™
Coffignon Optique, Paris, France
Photo: © HESTIA Photo
Design: Ségolène Toussaint Architecte



■
Rug in PARCHMENT, Mini Basketweave™
Loeffler Randall, New York, NY, USA
Photos: Loeffler Randall
Design: The Unionworks



Rolls in SANDBAR, Reed™
Fifty One East, Doha, Qatar
Photo: Dow Photography
Design: Dobas AG Interior Design and Architecture

Chilewich
39 West 19th Street
New York, NY 10011

T +1 212 679 9204
F +1 212 679 9205

Chilewich® and TerraStrand® are registered trademarks.
© 2023 Chilewich | Sultan LLC. All rights reserved.

chilewichAD.com

chilewich®