

Contract Highlights



chilewich®



Bringing depth to surfaces.

Chilewich Contract provides design solutions for floors, walls, windows, and upholstery to architects and designers worldwide. Made in the United States, these products combine innovative weaves and a distinctive color palette with proven durability, easy maintenance, and a warranty of up to 15 years.

chilewichcontract.com

 @chilewich

Contents

6	Applications
8	Features and Certifications
9	Material
10	Floor and Textile Icons
13	Collection Highlights
14	Bamboo
18	Upholstery
20	Heddle
24	Ikat
30	Wave
31	Mosaic
32	Scout
34	Bouclé
38	Wabi Sabi
42	Window Covering
45	Installations

Applications



Tiles and Planks

Modular 18" (45.7 cm) square Tiles or 6" × 36" rectangular Planks (15.2 × 91.4 cm) are made of Chilewich signature woven textiles bonded either to BioFelt® — an innovative felt and vinyl backing system—or to a vinyl backing system. Chilewich has been granted U.S. Patent 7,326,661 for these innovative tiles.

BioFelt® backing is recommended for use in commercial, retail, healthcare, and hospitality environments. Installed with adhesives, BioFelt® offers cushioning underfoot while providing a waterproof layer of protection against stains and spills, making it easier to clean and quicker to dry. The post-consumer recycled content of BioFelt®-backed tiles exceeds 27%.

Vinyl backing is recommended in areas with heavy rolling traffic and for fitness and outdoor applications.



Wall Textiles

Extraordinarily durable, our Type III Wall Textiles offer designers a way to reimagine vertical surfaces and are unique in their ability to coordinate with Chilewich floor coverings. They are used extensively for healthcare, hospitality, and multi-family properties as well as projects that require more durable and easy-to-maintain wall treatments. For environments with a high level of ambient noise, Wall Textiles are available with our WhisperFelt acoustic backing.

Rolls

Designed for wall-to-wall use, Rolls are made of Chilewich signature woven textiles bonded either to BioFelt® — an innovative felt and vinyl backing system—or to a vinyl backing system.

BioFelt® backing is recommended for use in commercial, retail, healthcare, and hospitality environments. The post-consumer recycled content of BioFelt®-backed rolls exceeds 27%.

Vinyl backing is recommended in areas with heavy rolling traffic and for fitness and outdoor applications.



Upholstery Fabric

Chilewich Upholstery Fabric is designed to provide versatility, durability, and ease of maintenance. Used to enhance a broad variety of furnishings and surfaces, these textiles add color and texture through their unique weave construction. Suitable for both indoor and outdoor use.



Rugs

Suitable for indoor and outdoor use, Rugs are made of Chilewich signature woven textiles bonded to a flexible latex underlayer. This durable, commercial-grade backing helps to protect the floor while providing enhanced slip resistance and increased comfort underfoot.

Rugs are finished with self-bound edges. Made by folding the face fabric over the edge of the mat and sewing it into place, this unique finishing step provides a clean look.

Custom sizes are available in all weaves.



Window Coverings

Chilewich signature woven textiles are available as roller shades and panel systems. With their shimmering, multi-tonal colors, the collection's distinctive weaves enhance windows in residential and commercial settings.

Features and Certifications

TerraStrand®

BioFelt®

WhisperFelt®



MICROBAN®



Chilewich yarns use phthalate-free, vegetable-based compounds in place of petroleum-based plasticizers. These innovative yarns, and the fabrics made from them, are called TerraStrand®. Consisting of a minimum of 18% rapidly renewable content, Chilewich products qualify to earn LEED points.

BioFelt® is a composite tile and roll backing system composed of 27% post-consumer content. Installed with adhesives, it offers cushioning underfoot and waterproof protection from spills and stains. This backing protects the surface below from water intrusion while providing a flooring that is easier to clean and quicker to dry.

WhisperFelt enhances Chilewich’s durable and easy-to-maintain wall textiles with the benefits of sound absorption and sound refraction. Made in the USA of needled polyester, this lightweight non-woven textile layer absorbs sound waves, which helps to reduce echo and reverberation within a space. The Class B material has an NRC of .15 and is free of the chemicals and fibrous irritants found in many forms of acoustic insulation.

Low in volatile organic compounds, Chilewich flooring products comply with Green Label Plus® certifications, which are recognized by the U.S. Green Building Council, and therefore Chilewich products qualify to earn LEED points.

Chilewich textile products comply with GreenGuard® programs. GreenGuard® certifications are recognized by the U.S. Green Building Council, and therefore Chilewich products qualify to earn LEED points.

Chilewich products contain Microban® and inhibit the growth of mold and mildew.

All Chilewich Contract products have up-to-date Health Product Declarations and Environmental Product Declarations. Chilewich Sultan LLC has achieved a UL Environmental Product Textiles Declaration certification.

Chilewich Contract flooring meets or exceeds all industry specifications in the United States and Europe for heavy-duty applications.

All Chilewich Contract textiles are certified by the Association for Contract Textiles for Flammability and four aspects of fabric durability: Wet & Dry Crocking, Colorfastness to Light, Physical Properties, and Abrasion in High-Traffic Areas. These registered certification marks for voluntary performance guidelines assure that the fabrics meet or exceed contract standards and pass all applicable testing.

All Chilewich Contract floor and textile products are designed and manufactured in the United States and ship from Chatsworth, Georgia, and/or Barcelona, Spain.

Maximizing performance. Minimizing impact.



Chilewich textiles are renowned for their beauty and practicality, combining original designs and distinctive colors with extraordinary durability and easy maintenance. They’re also the product of 20 years of continuous innovation to maximize performance and minimize environmental impact. We’re proud of the strides we’ve made, and we’re committed to ongoing improvements in our materials and processes. We take health and safety as seriously as we do innovation.

Free of phthalates and heavy metals.

All Chilewich yarns are made in the USA by extruding phthalate-free vinyl over a core of fiberglass or polyester. Our yarns are also free of heavy metals such as lead and cadmium.

Softened by soybeans.

We replaced all phthalates with a plasticizer made from soybeans, not petroleum. Using this renewable, bio-based compound results in a 40% reduction in greenhouse gases compared to other plasticizers.

Recycled and renewable content.

Half of all Chilewich flooring uses BioFelt: our PVC-free backing made from water bottles and other post-consumer recycled materials, renewable compounds, and post-industrial materials.

Environmentally safe.

Our products have been tested and certified by the Green Label Plus™ and GreenGuard® programs for low VOC emissions, and they can be found in healthcare settings that include major hospitals.

Green cleaning.

Our textiles can be washed with water and biodegradable detergents.

Extended lifespan.

Strengthened by triclosan-free antimicrobial protection, our products retain their beauty and functionality for many years, reducing energy- and cost-intensive replacement and the associated waste.

State-of-the-art American manufacturing.

From carefully sourcing polymers to ensuring that our own factory in Georgia meets or exceeds EPA and OSHA standards, we take health and safety as seriously as we do innovation.

Floor Icons

P - Core | Stock and Custom Rugs

Made of sturdy woven vinyl with a polyester core, this textile is appropriate for light-duty commercial applications and all residential applications. It is easy to maintain and can be used both indoors and outdoors.



FG - Core | Tiles, Planks, Rolls, and Rugs

Made of sturdy woven vinyl with a fiberglass core for trouble-free seaming, this textile is engineered for durability in even the most highly trafficked areas. It is appropriate for all applications, including heavy-duty commercial applications.



Textiles Icons

P-Core | Windows, Upholstery, and Wall Textiles (Category VI, Type III)

Made of sturdy woven vinyl with a polyester core, this textile offers wall protection performance appropriate for all applications, including high-traffic commercial applications. The upholstery is also appropriate for all applications, including high-traffic commercial applications. It is easy to maintain and can be used both indoors and outdoors.



FG-Core | Wall Textiles (Category VI, Type III)

Wall protection performance appropriate for all applications, including high traffic commercial applications.



Collection Highlights



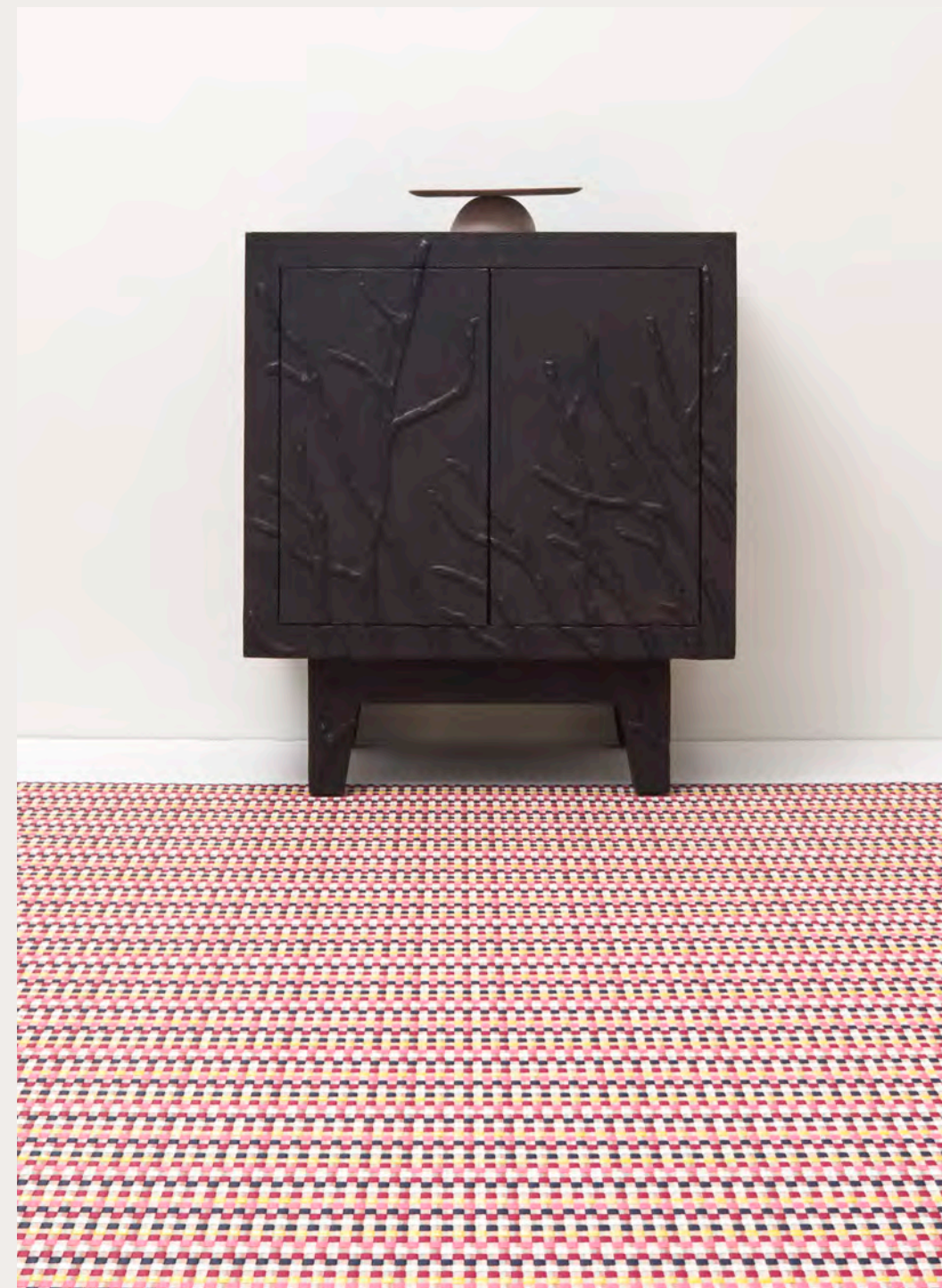
Acoustic Wall Tiles in RAIN, Bamboo™
Eames® Molded Fiberglass Arm Chair: DWR



Opposite: Rug in COCONUT, Bamboo™
Above: Wall Textiles in SPRING GREEN, Bamboo™
Celine Desk: DWR



Upholstered Cushions in
SPRING GREEN / RAIN / POPPY, Bamboo™



Rug in PANSY, Hedde™
Floral Nightstand: Stephanie Odegard Co, Ltd.

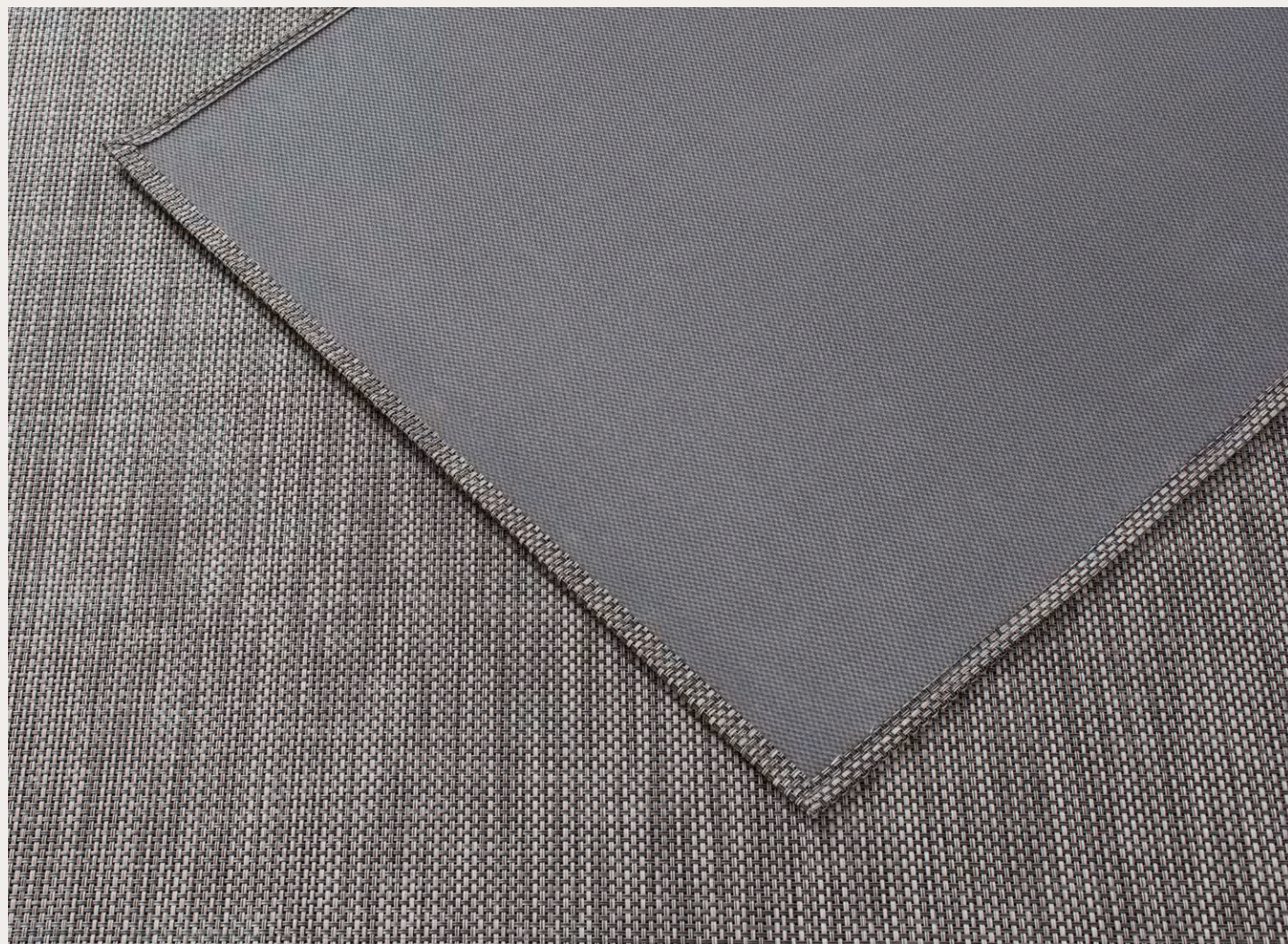


Rug in DOGWOOD, Hedde™
Floral Nightstand: Stephanie Odegard Co, Ltd.





Opposite: Wall Textiles in HUNTER GREEN, Ikat™
Above: Square Tiles in SEA, Ikat™



Above: Latex backing in OYSTER, Basketweave™
Opposite: Rolls in GULL GREY, Ikat™

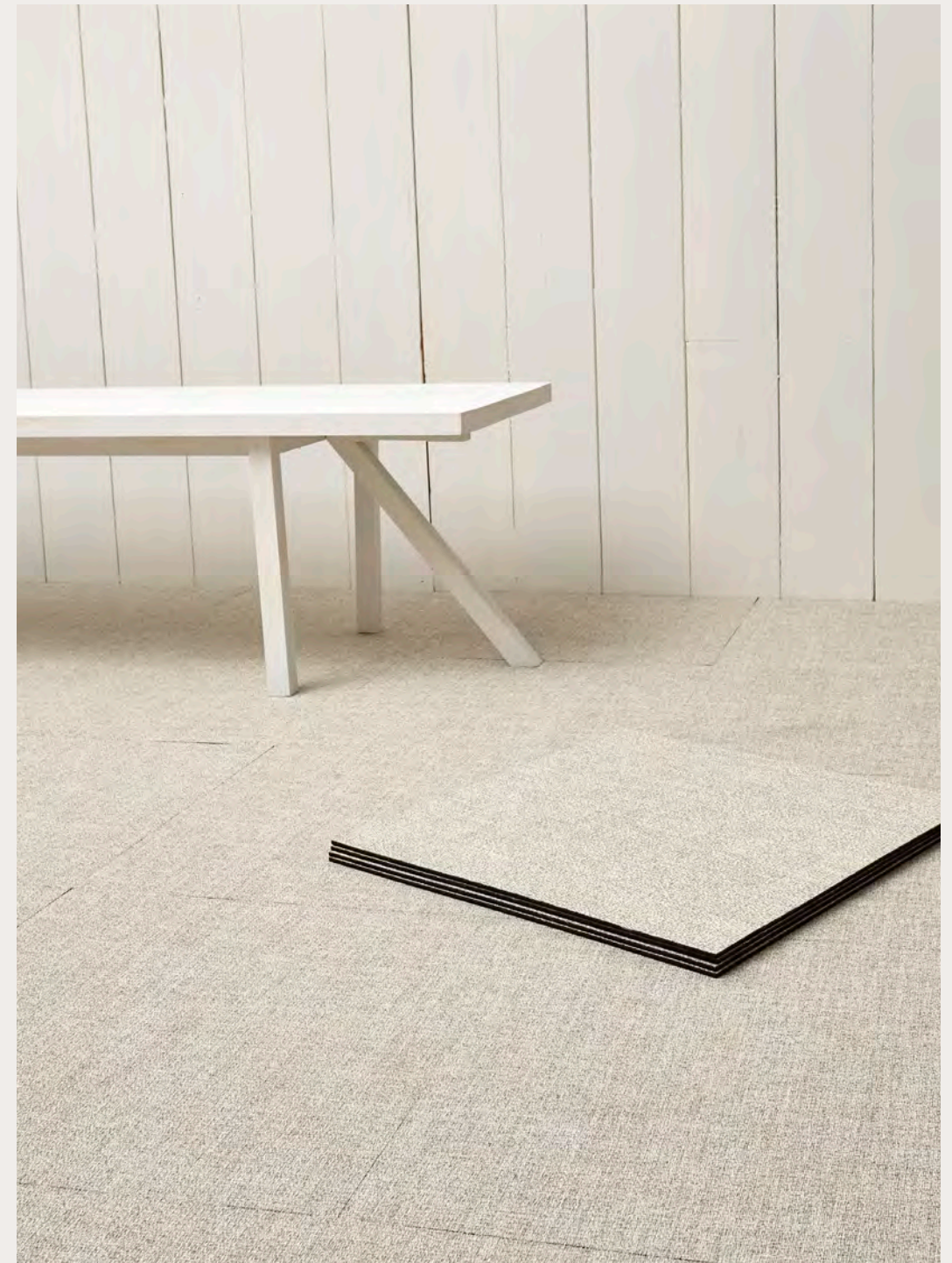


Opposite: Wall Textiles in POOL, Wave™
 Above: Rug in LYCHEE, Mosaic™
 Small Ghost Buster: Philippe Starck for Kartell



Opposite: Rug in GRAPHITE, Scout™
Above: Wall Textiles in MIDNIGHT, Scout™

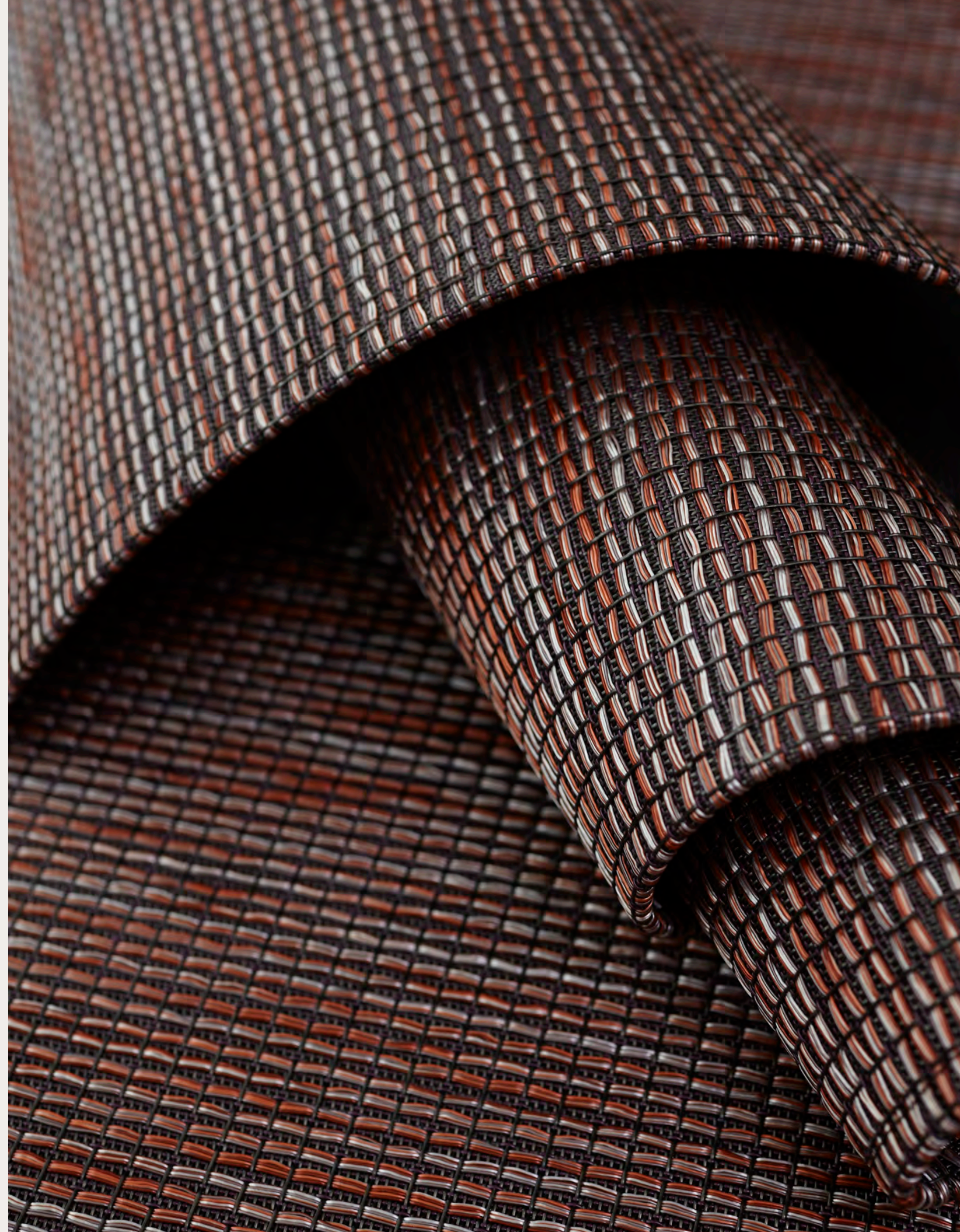




Opposite: Rug in ROSE, Bouclé™
 Above: Square Tile in NATURAL, Bouclé™
 Sound Rack: Kartell



Rugs in INDIGO, Wabi Sabi™





Opposite: Window Coverings in CHALK, Bamboo™. | Photo: Victor Schrager.
Above: Window Coverings in MATCHA, Mini Basketweave™ | Photo: The Shade Store.

Installations






Opposite: Rolls in LATTE, Basketweave™
 Above: Tiles in LATTE, Basketweave™
 Client: Pharmaceutical Corporation
 Photos: Halkin | Mason Photography
 Architect Firm: Granum A / I



Rolls in BIRCH, Shade™
 Client: Hearst Sheffield Office, NYC
 Photos: Adrian Wilson



 Rolls in BLUE, Speckle™
Client: DAGA
Photos: John Cole
Design: SShape Inc





Custom Rug in OYSTER, Basketweave™
Client: Safran Toulouse FR
Design: Sylvie Escalé



Wall Textiles in LAGOON, Bouclé™
Client: NCARB
Design: OTJ Architects





Opposite: Wall Textiles in DARK WALNUT, Mini Basketweave™

Above: Wall Textiles in CHALK, Bamboo™

Client: Coopers Hawk Kentwood MI

Photos: Brian Kelly

Design: Aria Group



Above: Window Coverings in TAN, Plaid™
Photos: The Shade Store



Above: Wall Textiles in GREY, Plaid™
Client: Peel Pizza, St Louis, IL
Photos: Jeff Wellman Photography





chilewich®