

# Lookbook Spring/Summer 2025



chilewich®





The Spring/Summer collection weaves together nuance and novelty. Multifaceted textures are balanced by clean lines. Classic patterns are reimagined on the loom at bold new scales. Neutral hues are enlivened by unexpected color, deliberate in its distinction.

All products are made in the USA and suitable for indoor and outdoor use.



# Dune







DUNE, Canvas

**Shifting sands.** Tonal hues and softened angles bring a calming character to Dune, named for its resemblance to lines etched in sand. Our design team combined multiple weave structures to achieve an especially tactile surface, with meandering stripes of varying heights.



CANVAS



RAISIN





DUNE, Canvas





**One of a kind.** Dune was developed to have a large repeat. This not only enhances the continuity and organic character of the weave but also makes each placemat unique.



DUNE, Raisin

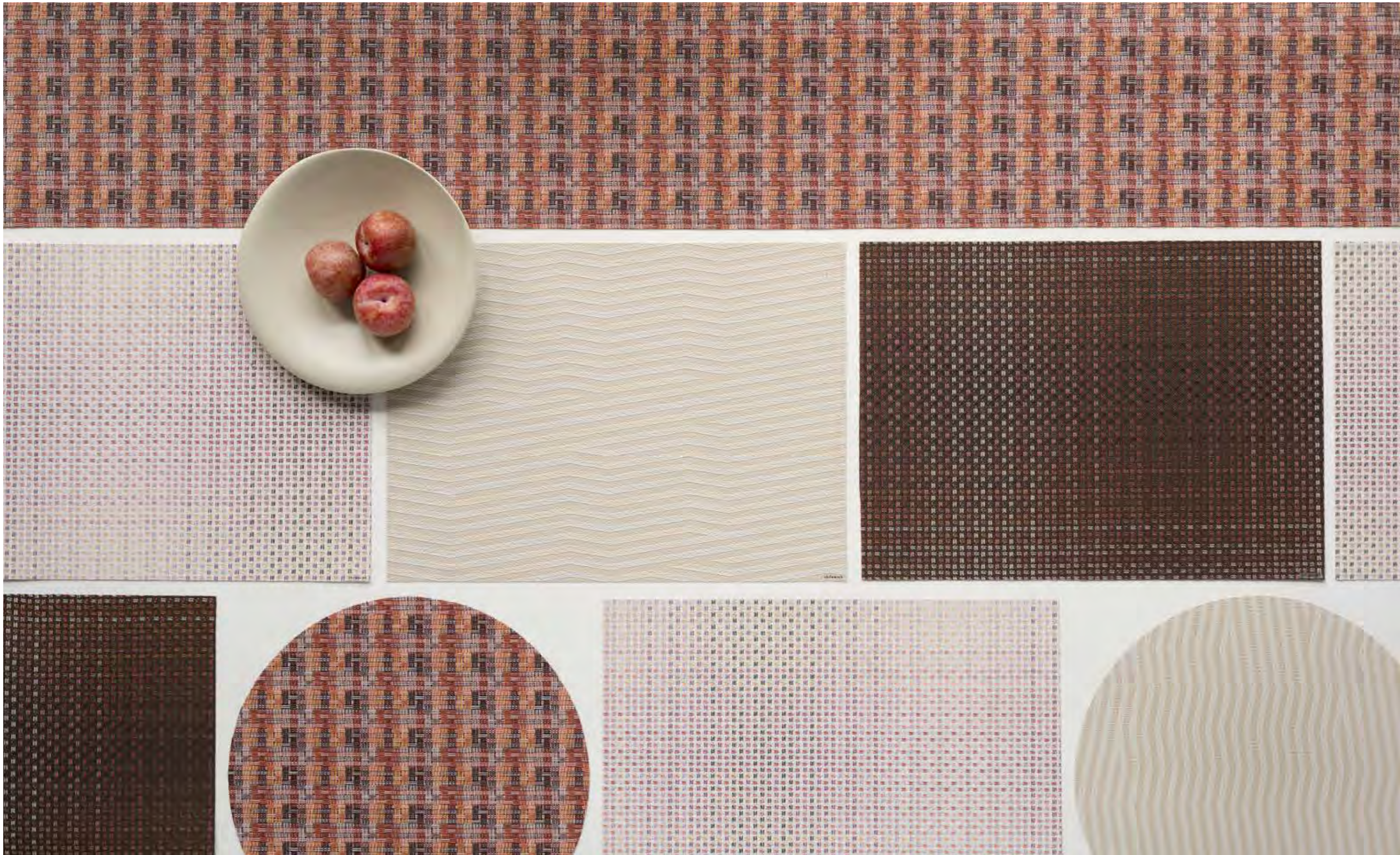




DUNE, Raisin











# Fable





FABLE, Sorbet

**The plot thickens.** Rich texture comes to the fore in Fable, in which staggered densities and multi-tonal colors create multifaceted stripes. This dynamic design resembles the handmade textiles created by collecting the “selvedge” of Chilewich fabric from our factory floor and weaving the ribbon-like strips into one-of-a-kind pieces.



COAST



SORBET





FABLE, Sorbet











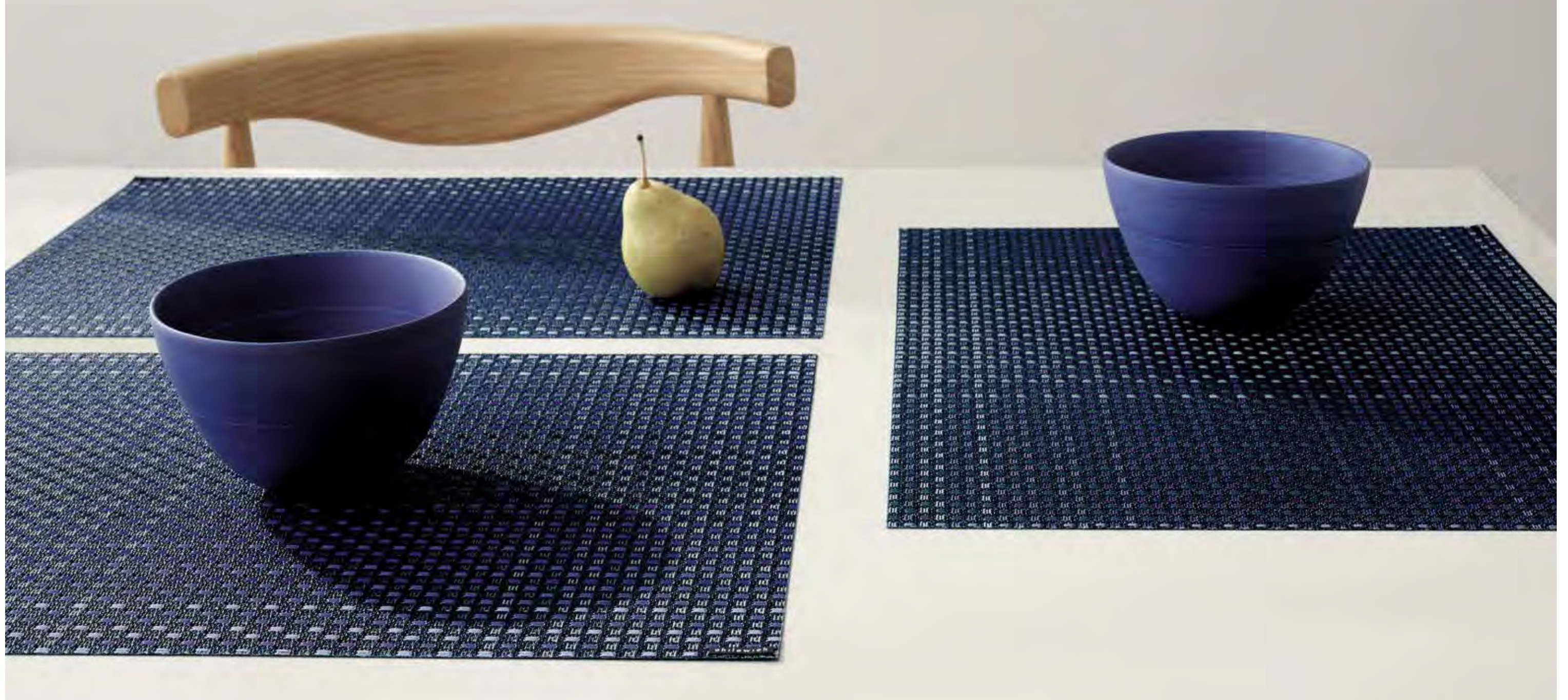
FABLE, Coast







# Parade







PARADE, Ocean

**Soft power.** Revealing the power of finely calibrated color, Parade is both an artful ombré and a boldly scaled plaid. Our design team developed it by translating an illustrated pattern into a hand-painted weave draft and ultimately bringing the progression of line and color to life on the loom.



OCEAN



RAISIN



SORBET





PARADE, Ocean





**Made to last.** Placemats and runners are ultrasonically sealed along the edges to prevent fraying.



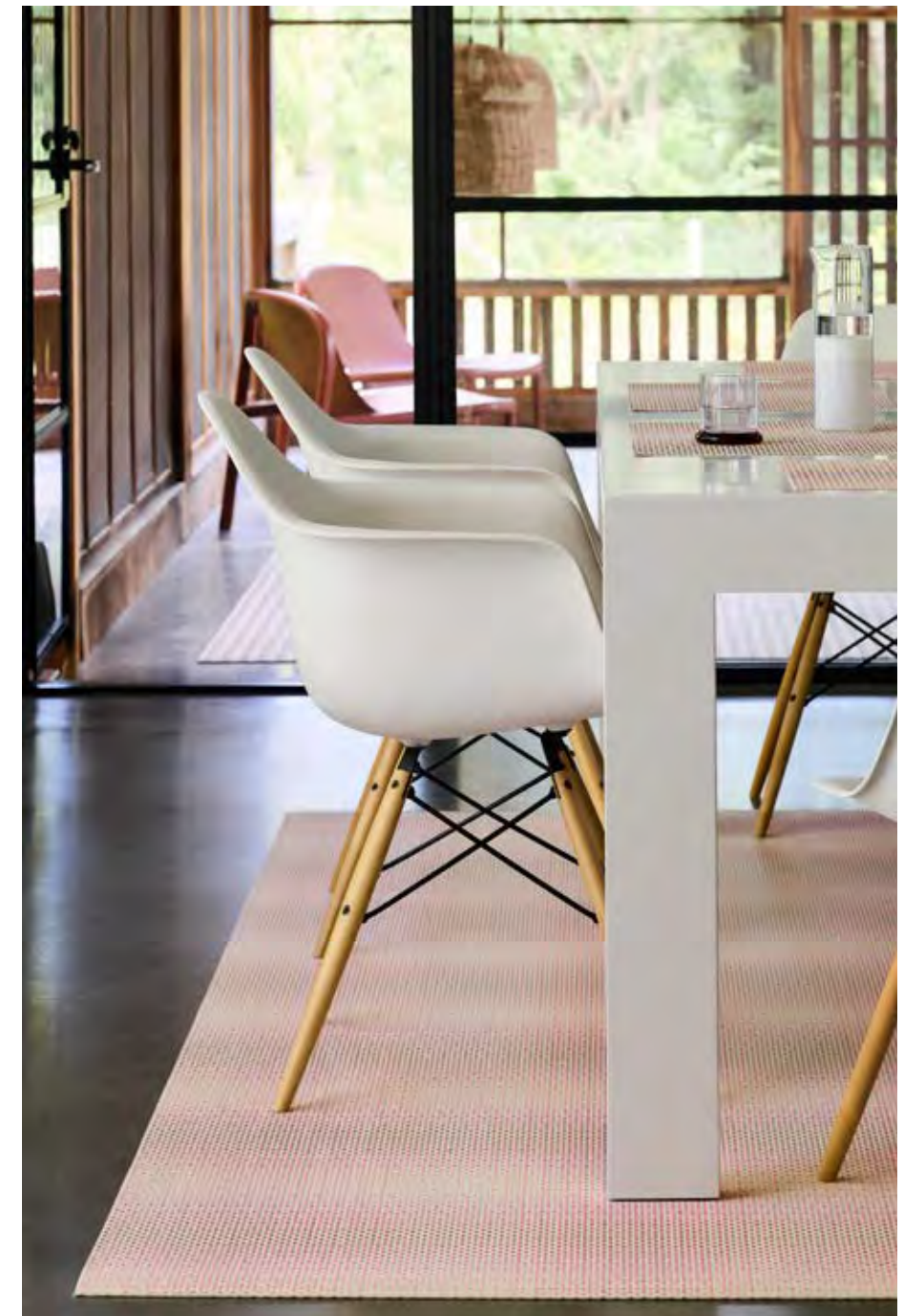




PARADE, Raisin







PARADE, Sorbet



NEW COLOR

# Basketweave







BASKETWEAVE, Coast

**A modern classic.** One of the oldest and simplest of weaving constructions, Basketweave is a Chilewich signature. This four-over-four weave allows us to express our unique point of view on color, as seen in Coast: a well-balanced mix of hues that brings rich texture to any space.



COAST





BASKETWEAVE, Coast





NEW COLOR

# Lattice

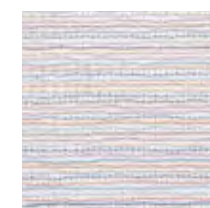




LATTICE, Sorbet

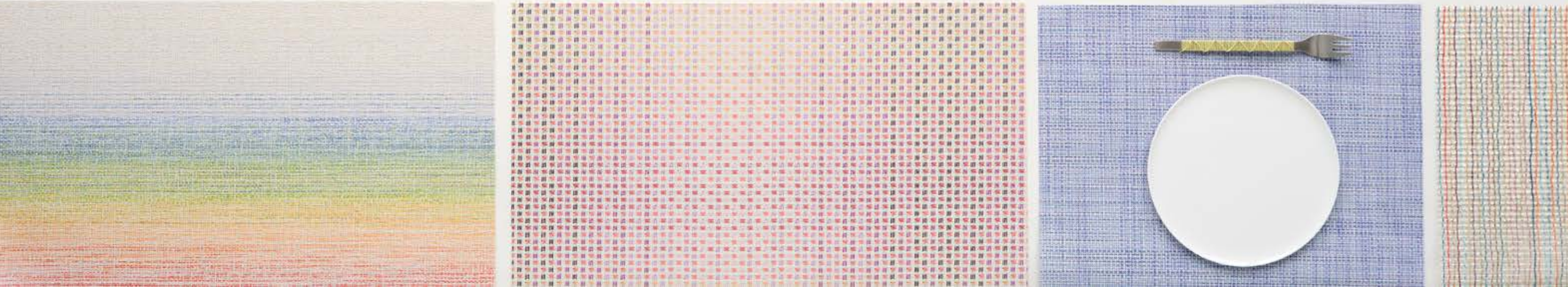
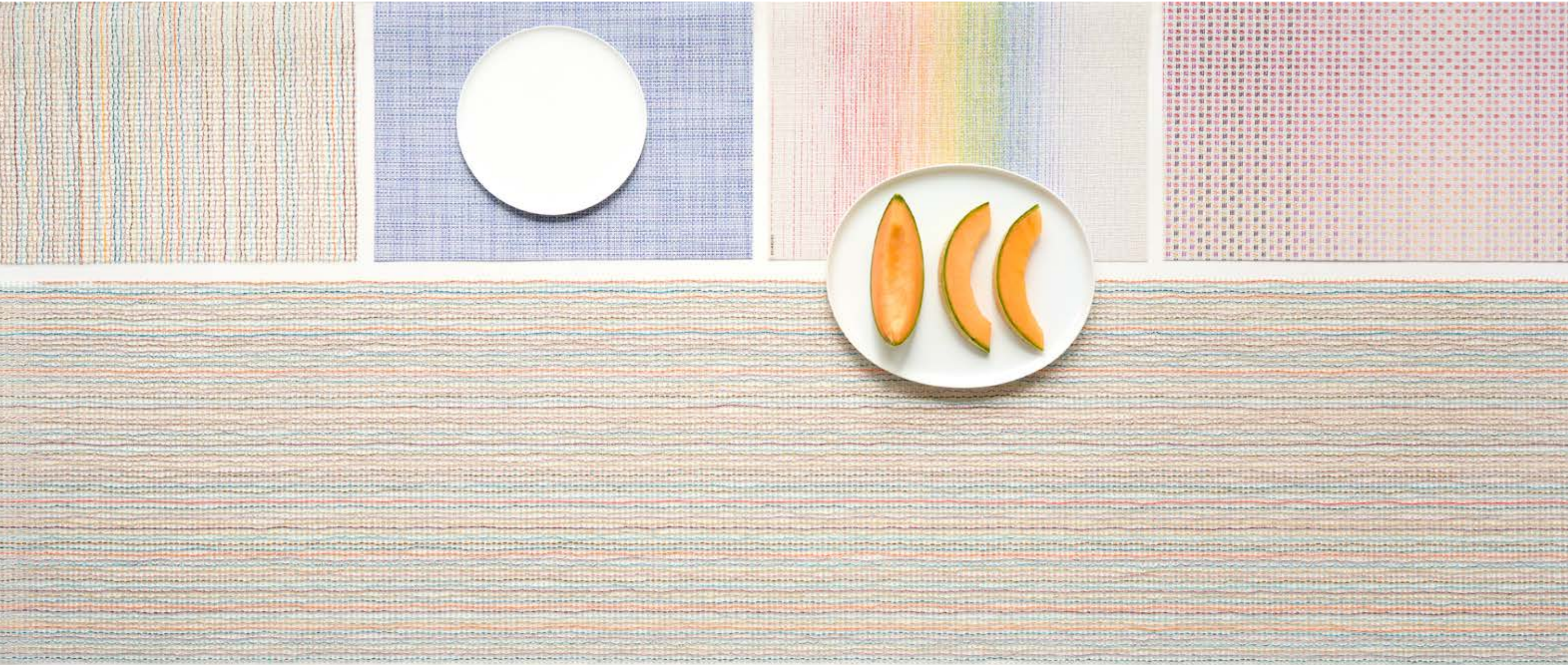
**With a twist.** When we challenged our weaving mill to extrude yarns with a clear casing over a colored core, they ended up with unexpectedly bumpy strands. Our urge to experiment further was irresistible.

Weaving the bumpy yarn on a leno loom yielded another fortuitous accident: the bumps forced the straight warp yarns to wiggle. With its crystalline shimmer and dynamic lines, Lattice brings luminous texture to the table.



SORBET





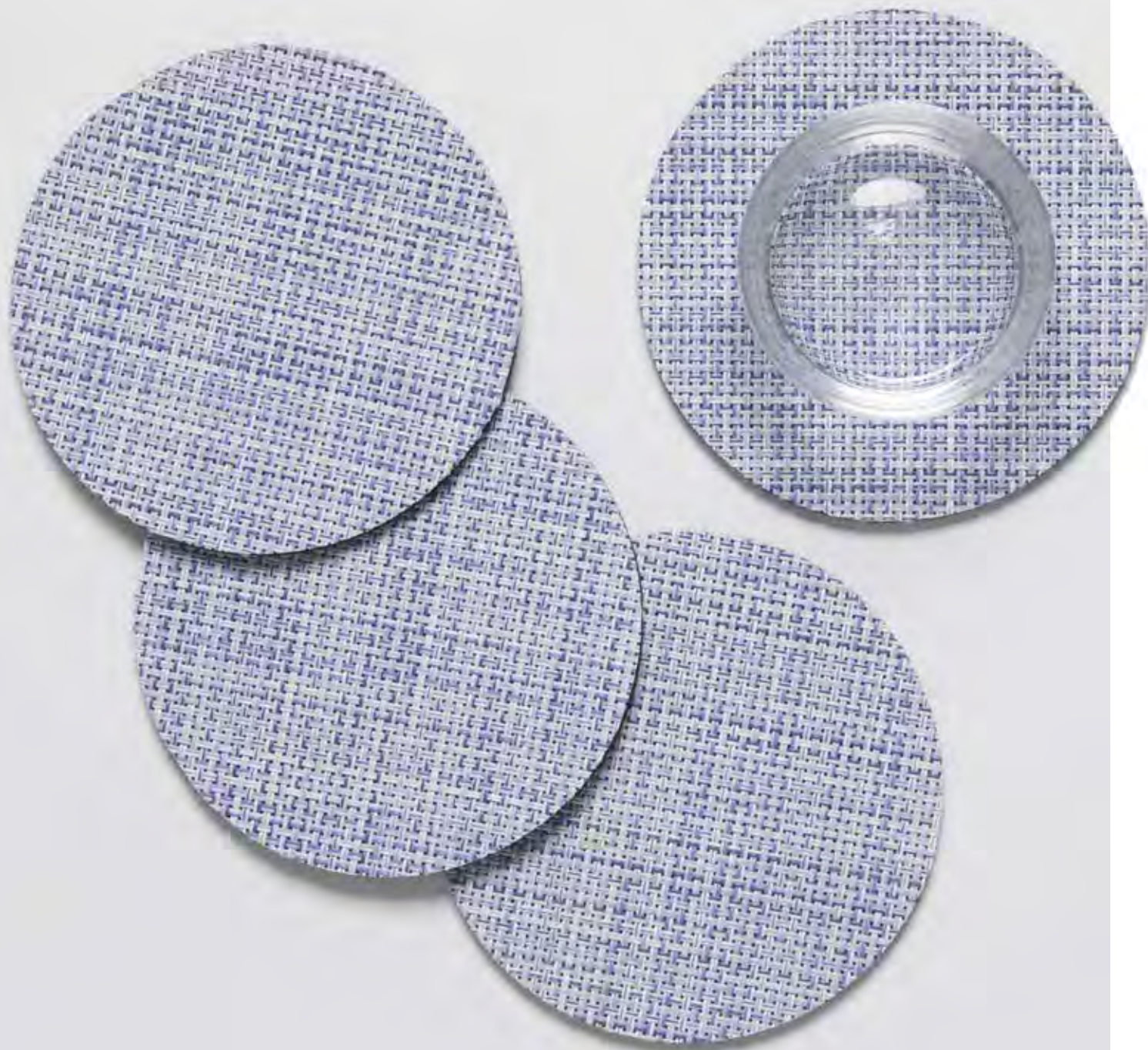


NEW COLOR

# Mini Basketweave







**Refined and resilient.** Mini Basketweave is our signature Basketweave in half time. Instead of four yarns over four, Mini Basketweave is two yarns over two, resulting in a quieter, less textural surface.



PERIWINKLE





MINI BASKETWEAVE

# Custom



MINI BASKETWEAVE, Periwinkle





MINI BASKETWEAVE, Periwinkle



NEW COLOR

# Ombre

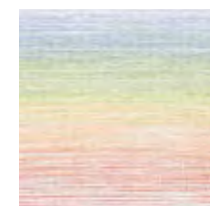






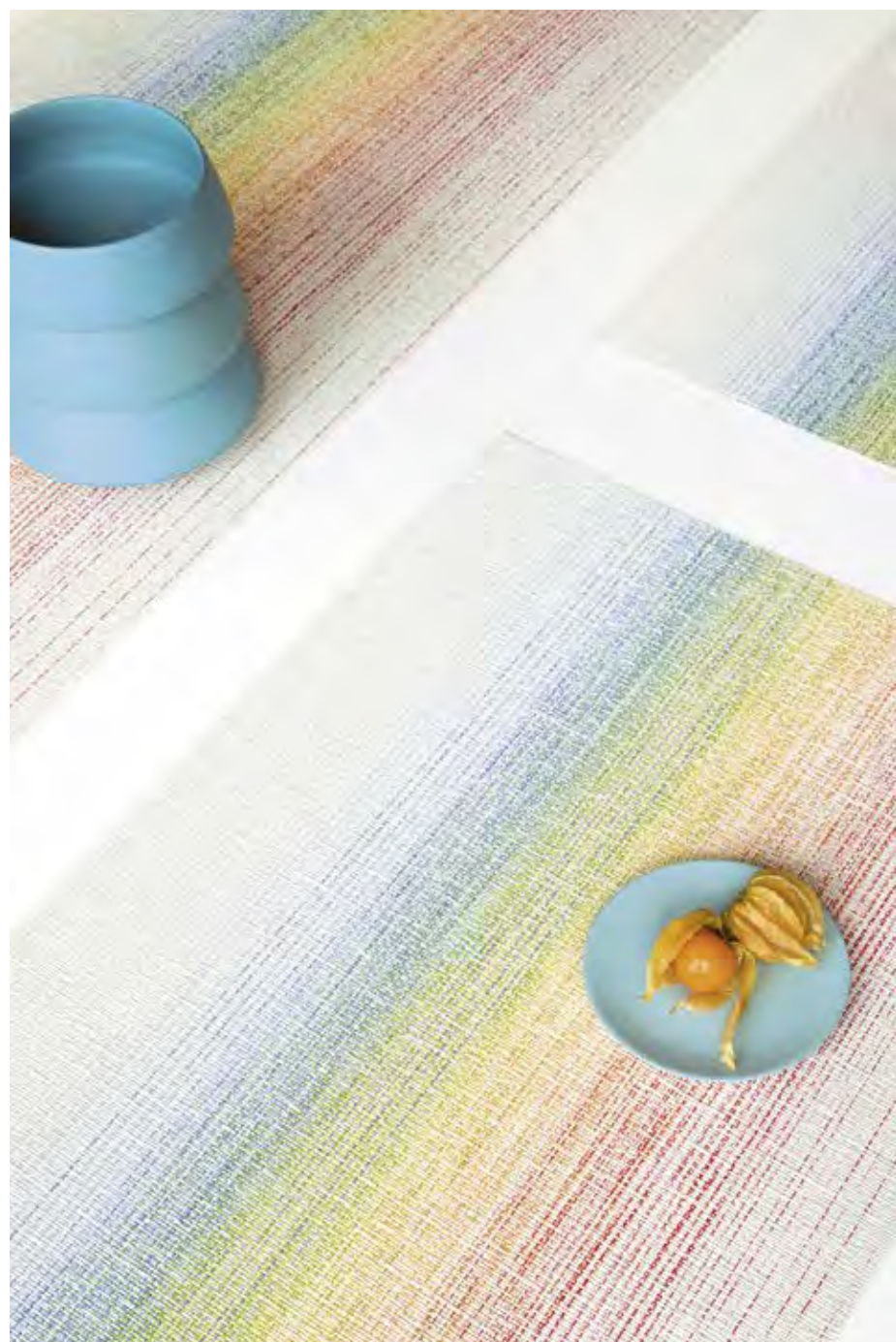
OMBRÉ, Rainbow

**True colors.** In this especially textural weave, a unique rotation of our signature bi-color TerraStrand® yarns creates a subtle ombré effect in the warp. We developed the new full-spectrum version in collaboration with the Elton John AIDS Foundation. It is inspired by the rainbow of LGBTQ identities.



RAINBOW

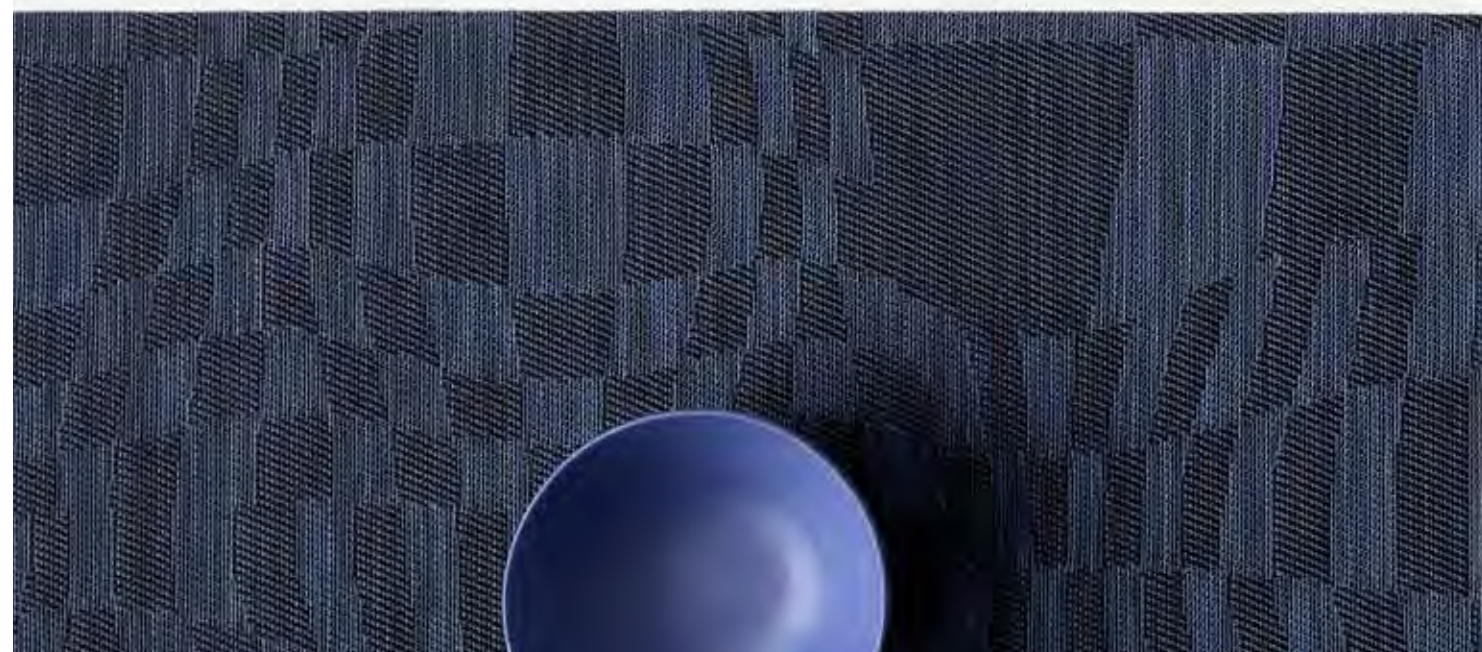




OMBRÉ, Rainbow





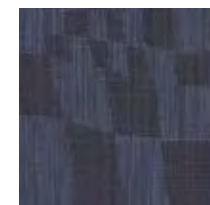






WARP, Ocean

**Optical allusions.** The geometry, symmetry, and contrast of a checkboard pattern is playfully softened in Warp. Squares break free of the grid, stretching and bending to form rows of undulating organic lines in neutral tones.



OCEAN





WARP, Ocean





NEW COLORS

# Skinny Stripe Shag





SKINNY STRIPE SHAG, Ocean

**The anywhere mat.** Debuting in fresh color combinations for Spring/Summer 2025, Shag mats are made by tufting looped TerraStrand® yarns onto a primary backing and then binding them onto a base of sturdy vinyl. These richly textured, quick-drying mats are ideal for entryways, bathrooms, kitchens, mudrooms, patios, pool areas, and beyond. Resistant to fading, staining, mold, mildew, and chlorine, they thrive indoors or out, all year round.



OCEAN

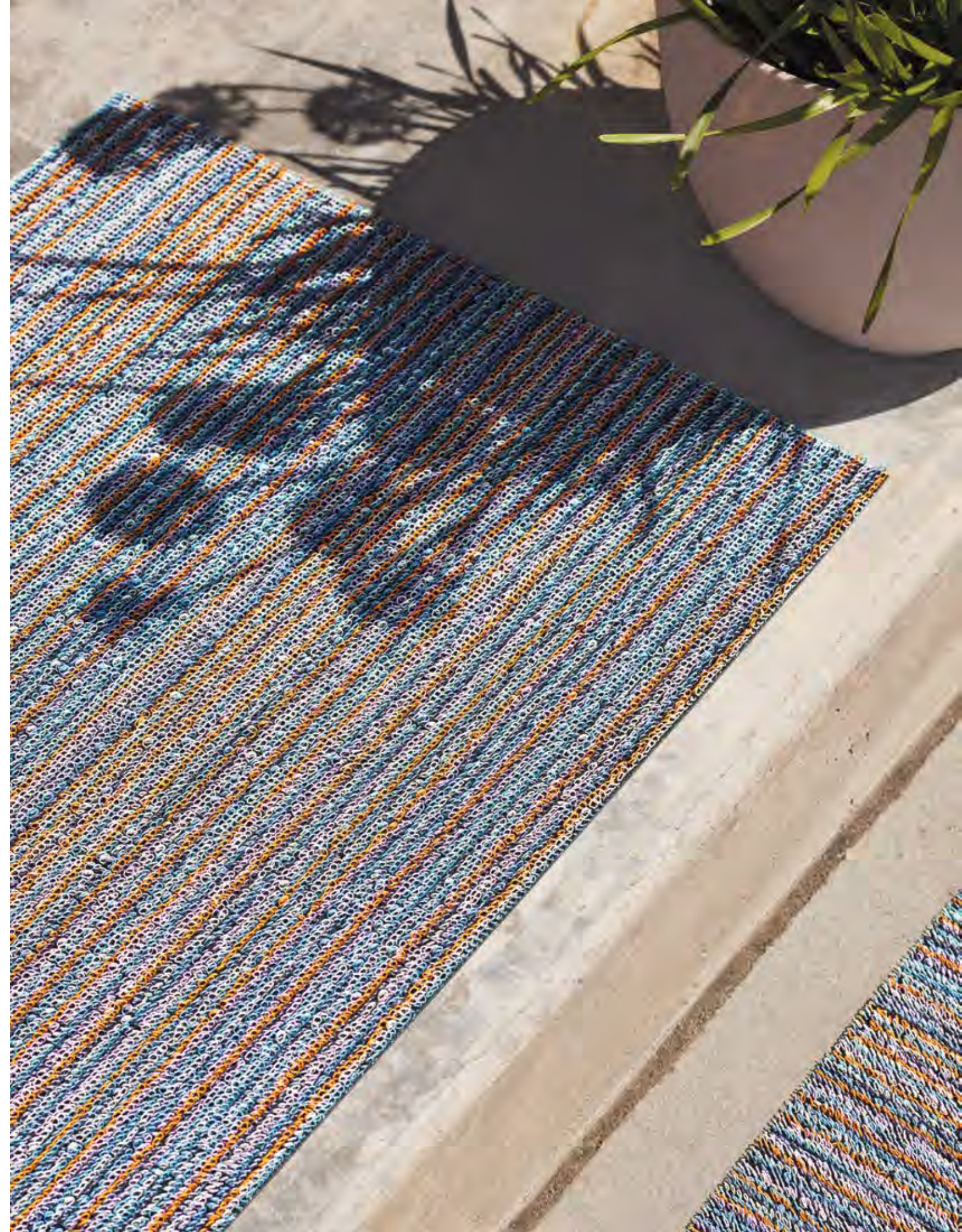


PERIWINKLE





SKINNY STRIPE SHAG, Periwinkle





NEW COLORS

# Breton Stripe Shag



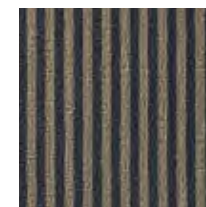


BRETON STRIPE SHAG, Coast

**Lively lines.** Inspired by the high-contrast uniform of naval mariners in northern France—a knit shirt that was first made chic by fashion designer Coco Chanel—Breton Stripe Shag mats reimagine seafaring lines through an inviting texture of tufted loops.



CANDY



COAST



MALIBU





BRETON STRIPE SHAG, Malibu







BRETON STRIPE SHAG, Candy



The background of the entire page is a close-up photograph of several large spools of thread. The threads are in various shades of white and light beige. In the foreground, there are several large, overlapping, hand-drawn circular lines in a light brown or tan color, creating an abstract, organic pattern. The lighting is soft and even, highlighting the texture of the threads and the smoothness of the lines.

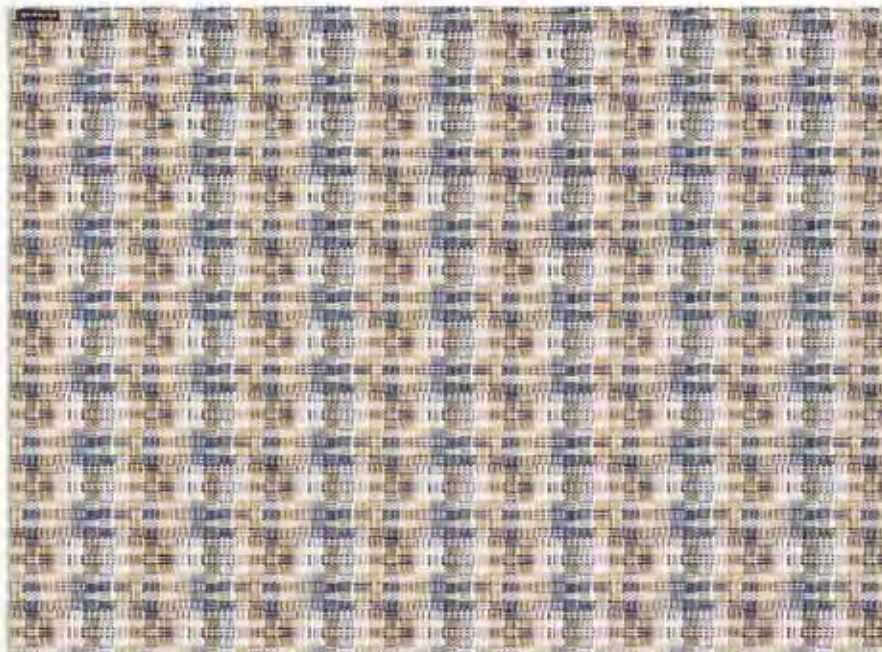
# Designed to inspire. Made to last.

Founded in 2000, Chilewich pushes the boundaries of form and function through products that combine innovative textiles and distinctive colors with extraordinary durability and easy maintenance. Our designs can be found in the permanent collection of the Cooper Hewitt, Smithsonian Design Museum, and in homes, workplaces, restaurants, hotels, and vehicles around the world.



# Stay in the loop.

Learn about our latest weaves, design debuts, special events, and more at [chilewich.com](https://chilewich.com), and keep in touch with our textures by following us on Instagram at [@chilewich](https://www.instagram.com/chilewich).



Chilewich  
39 West 19th Street  
New York, NY 10011

T +1 212 679 9204  
F +1 212 679 9205

Chilewich® and TerraStrand®  
are registered trademarks.  
© 2024 Chilewich | Sultan LLC.  
All rights reserved.

[CHILEWICH.COM](https://chilewich.com)

Photography:  
Pippa Drummond, Megan Senior



chilewich®