

A close-up photograph of several spools of thread in shades of red, pink, and white, resting on a white surface. In the foreground, there are several long, thin strands of thread in red and white, some forming loops. To the right, there are two rectangular fabric swatches with a woven pattern of red and white threads. The overall composition is artistic and focuses on textile details.

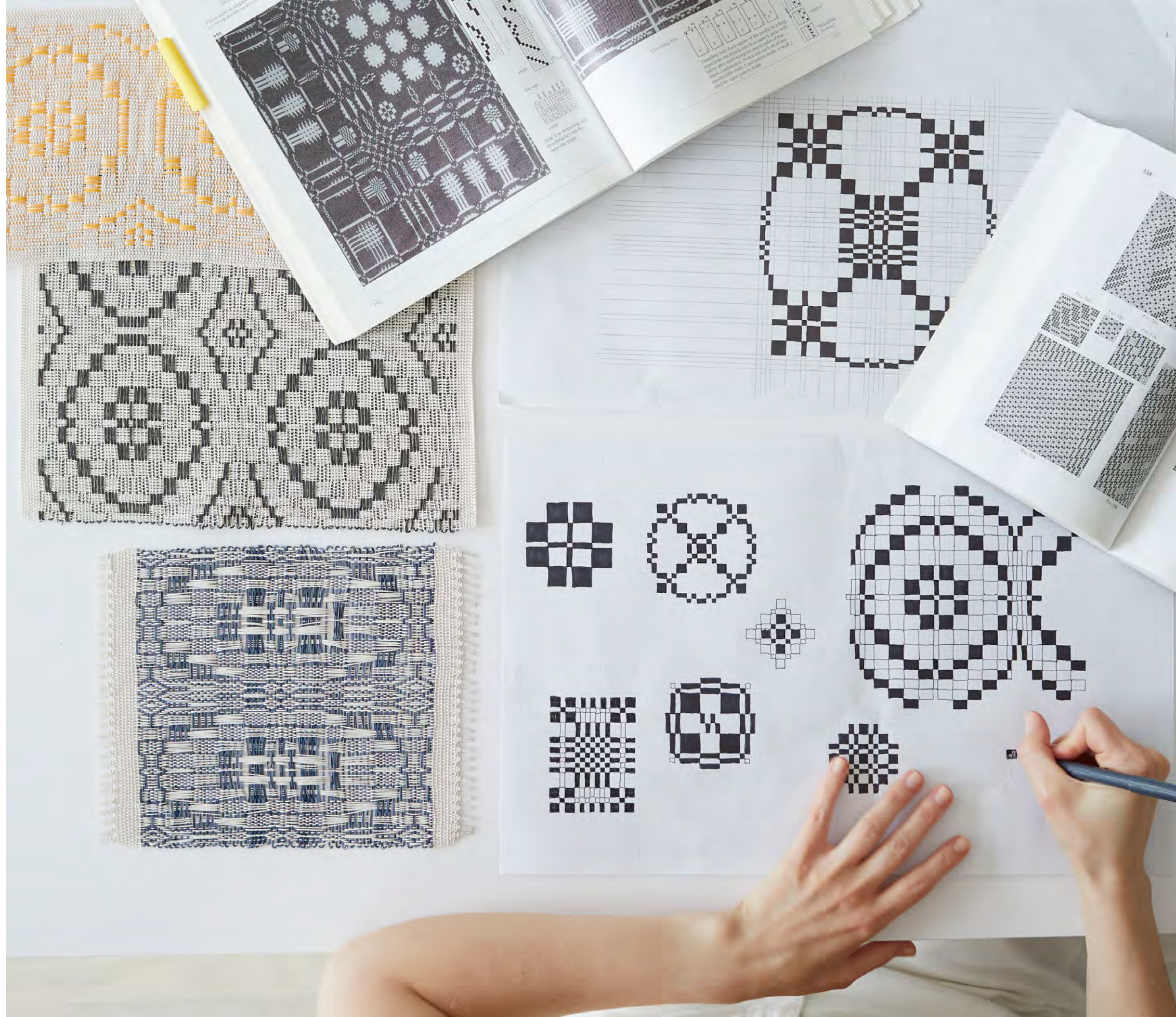
Lookbook Fall/Winter 2023

The Fall/Winter collection unfolds as a spirited conversation with the history of textiles, reimagining traditional weave structures and centuries-old patterns for modern living, indoors and out.

Burnished, multi-tonal hues of earth and spice add dimension to both debut weaves and signature styles in a warm palette balanced by endlessly adaptable neutrals.

At the heart of the collection is Overshot, inspired by vintage American coverlets.

Used as the topmost covering on a bed and distinct from quilts, these woven textiles were especially popular during the early to mid-nineteenth century. The earliest examples were made with an overshoot weave, and the craft continues today.





On the dobby loom at our New York Studio design studio, we developed and refined a contemporary interpretation of a traditional weaving technique.

Our Overshot is named is named for a weave structure with a long history and a distinctive construction: as the weft yarn jumps or “shoots” over the foundational plain weave of the warp yarns, a decorative pattern layer is created.



Overshot

A modern interpretation of a centuries-old craft.





Overshot, Paprika





Overshot, Butterscotch





Overshot, Butterscotch





Overshot, Denim



Overshot, Paprika

Arrow

Geometric precision softened by tonal hues.





Arrow, Porcelain





Arrow, Sapphire



Arrow, Sapphire



Arrow, Sapphire



Arrow, Porcelain





Arrow, Paprika



Swing

A joyful balance of undulating curves and underlying lines.





Swing, Butterscotch



Swing, Butterscotch



Swing, Paprika



Swing, Night

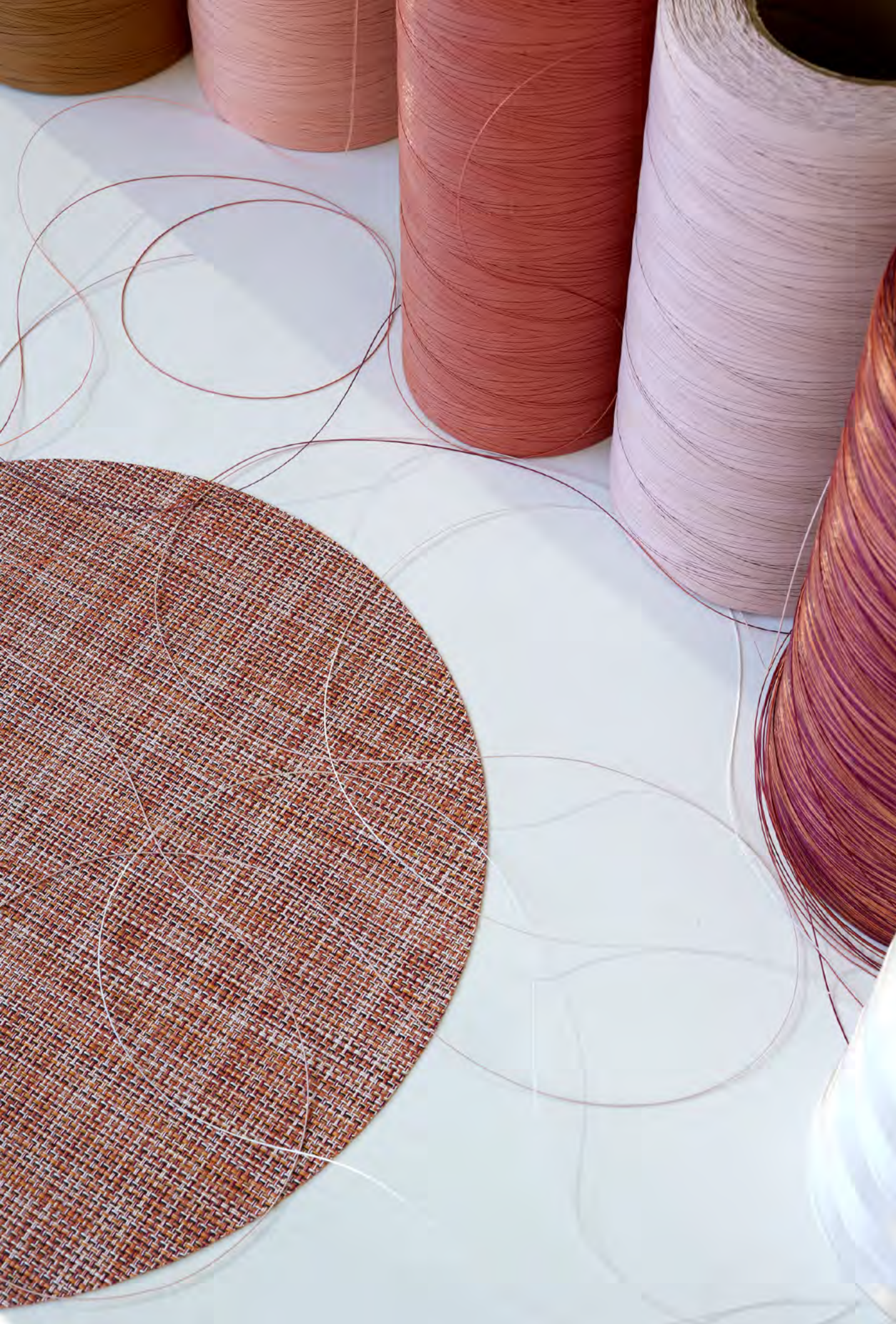


Swing, Paprika



Swing, Night





The spice of life.

Signature weaves take on new dimensions in warm colors inspired by natural wonders ranging from spices to gemstones.

Mini Basketweave in Cinnamon

Unmistakably autumnal.



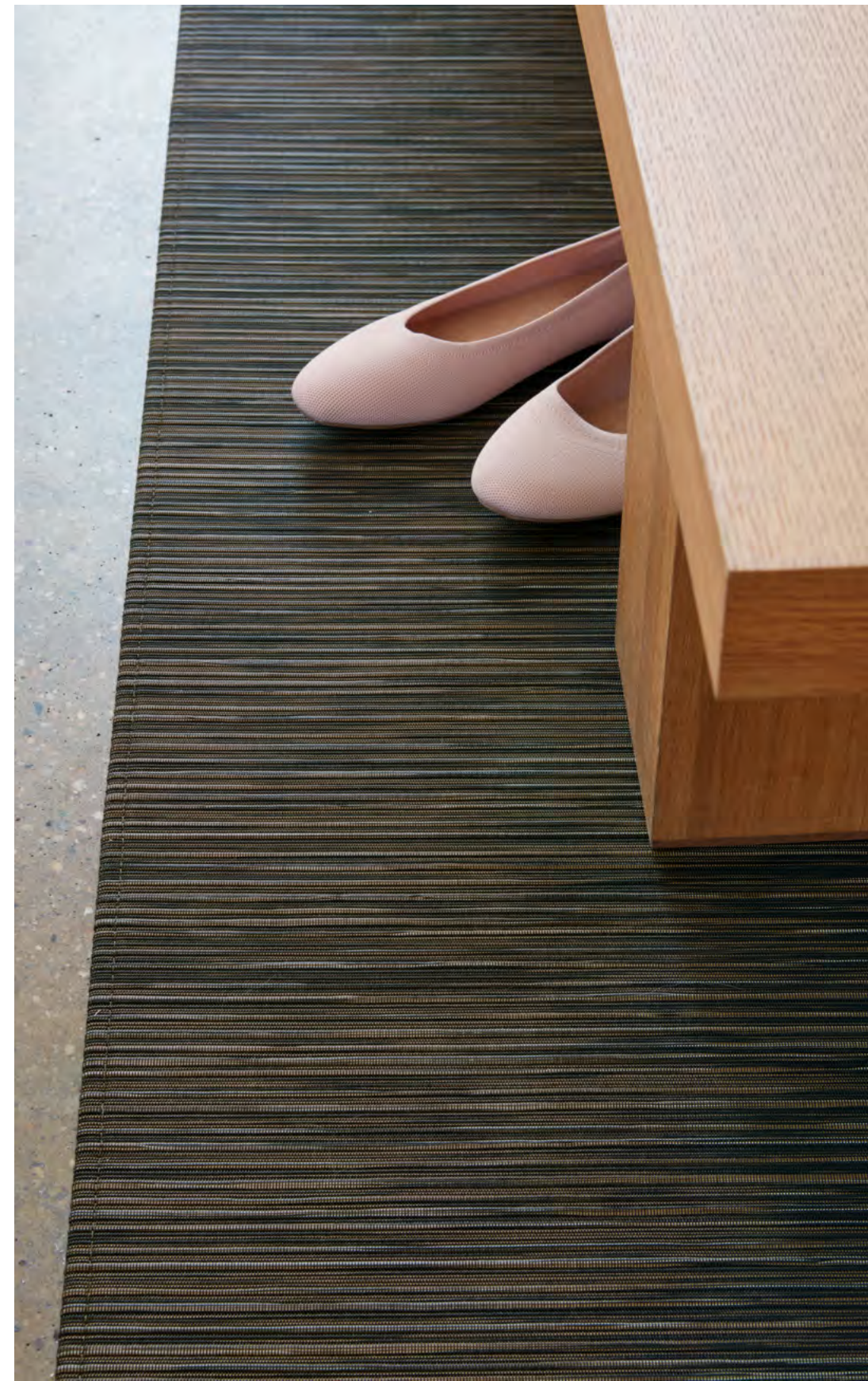
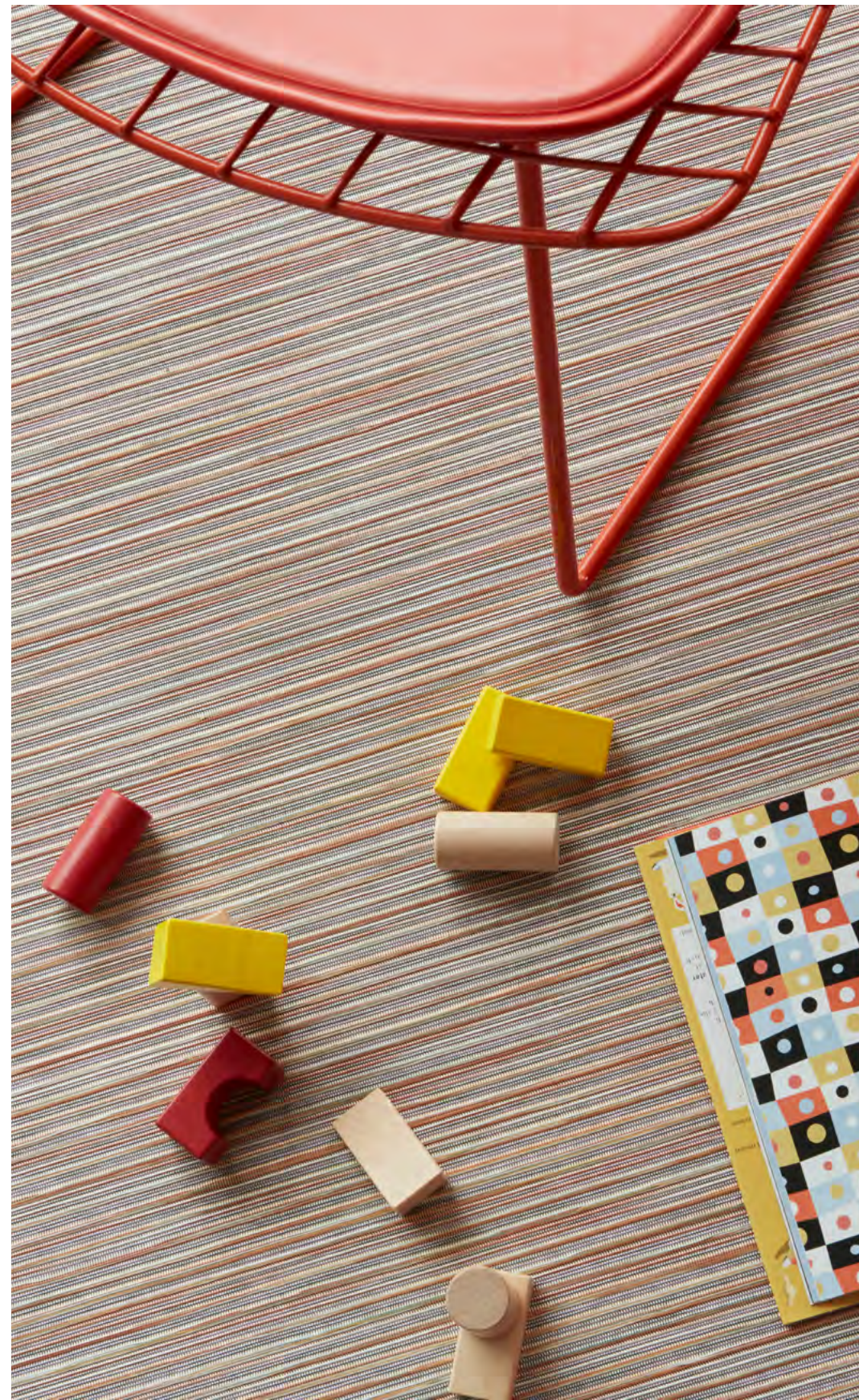


Mini Basketweave, Cinnamon



Rib Weave in Butterscotch, Spice, and Tiger Eye

Tone on tone on texture.





Rib Weave, Butterscotch



Rib Weave, Butterscotch



Rib Weave, Spice



Rib Weave, Spice



Rib Weave, Tiger Eye



Rib Weave, Tiger Eye



Rib Weave, Tiger Eye



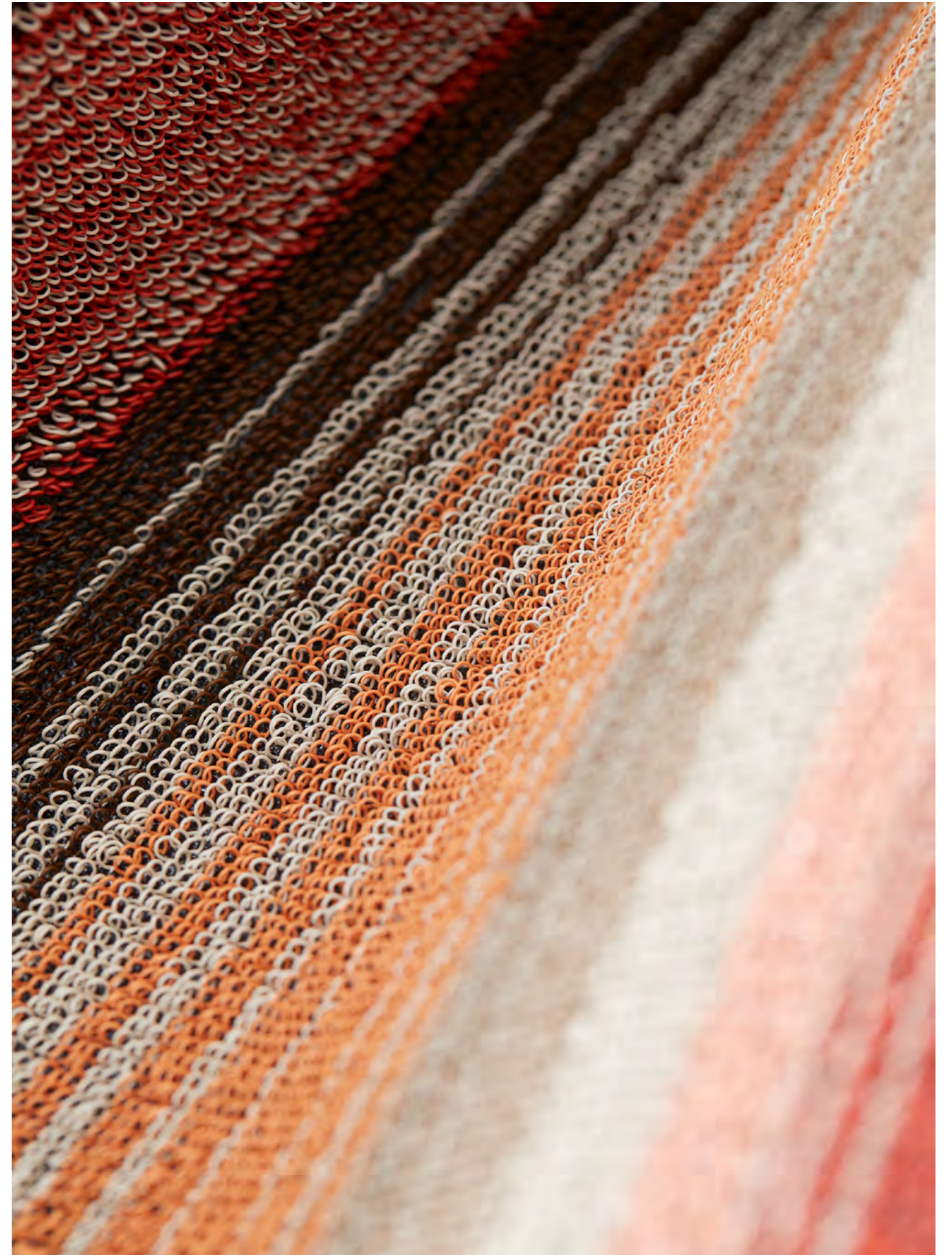
Shag mats of fall stripes.

Playful and practical, our tufted floor mats get a refresh with inviting new color combinations—one spicy, one cool.

Pop Stripe in Paprika

A syncopated spectrum of sun-baked hues.

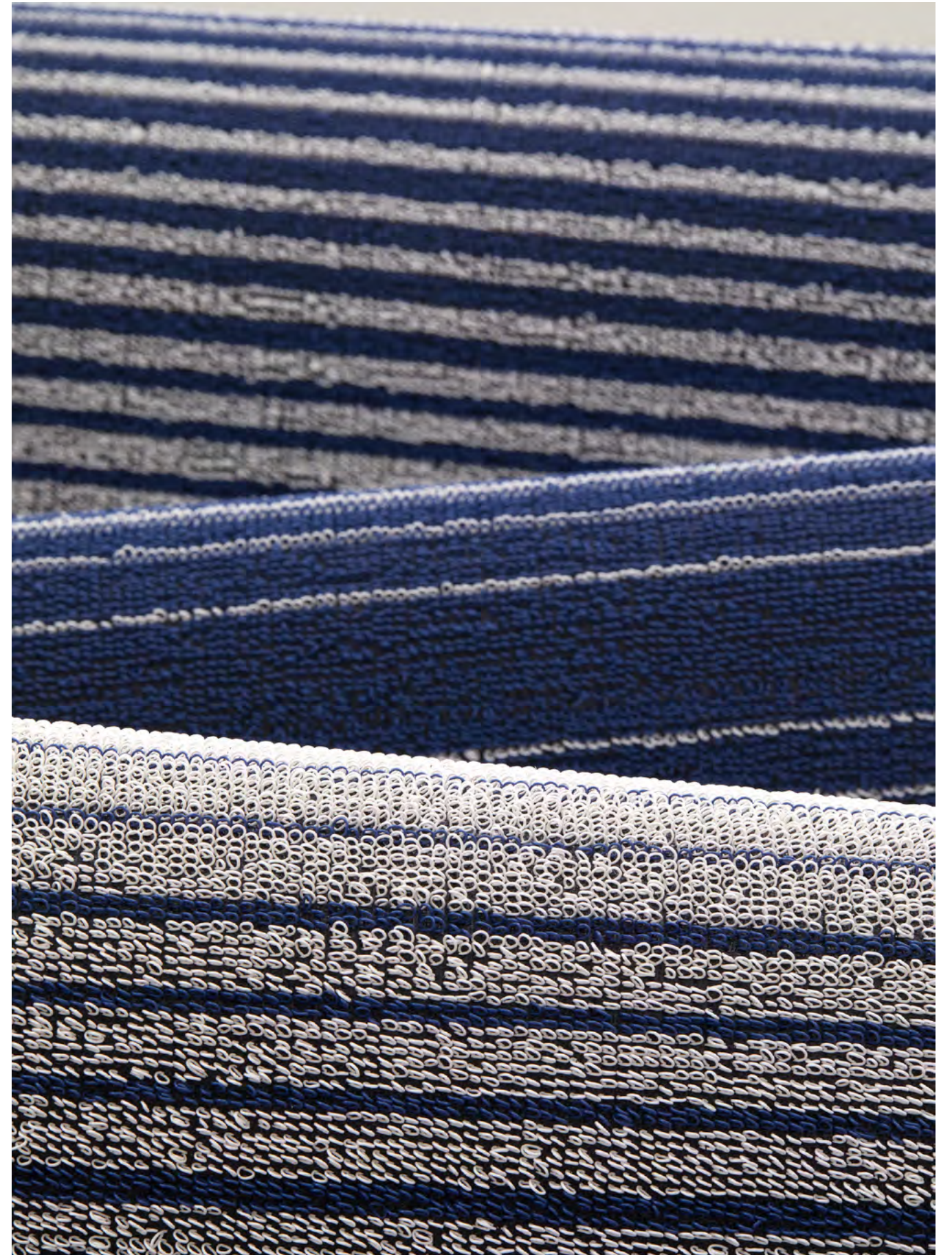
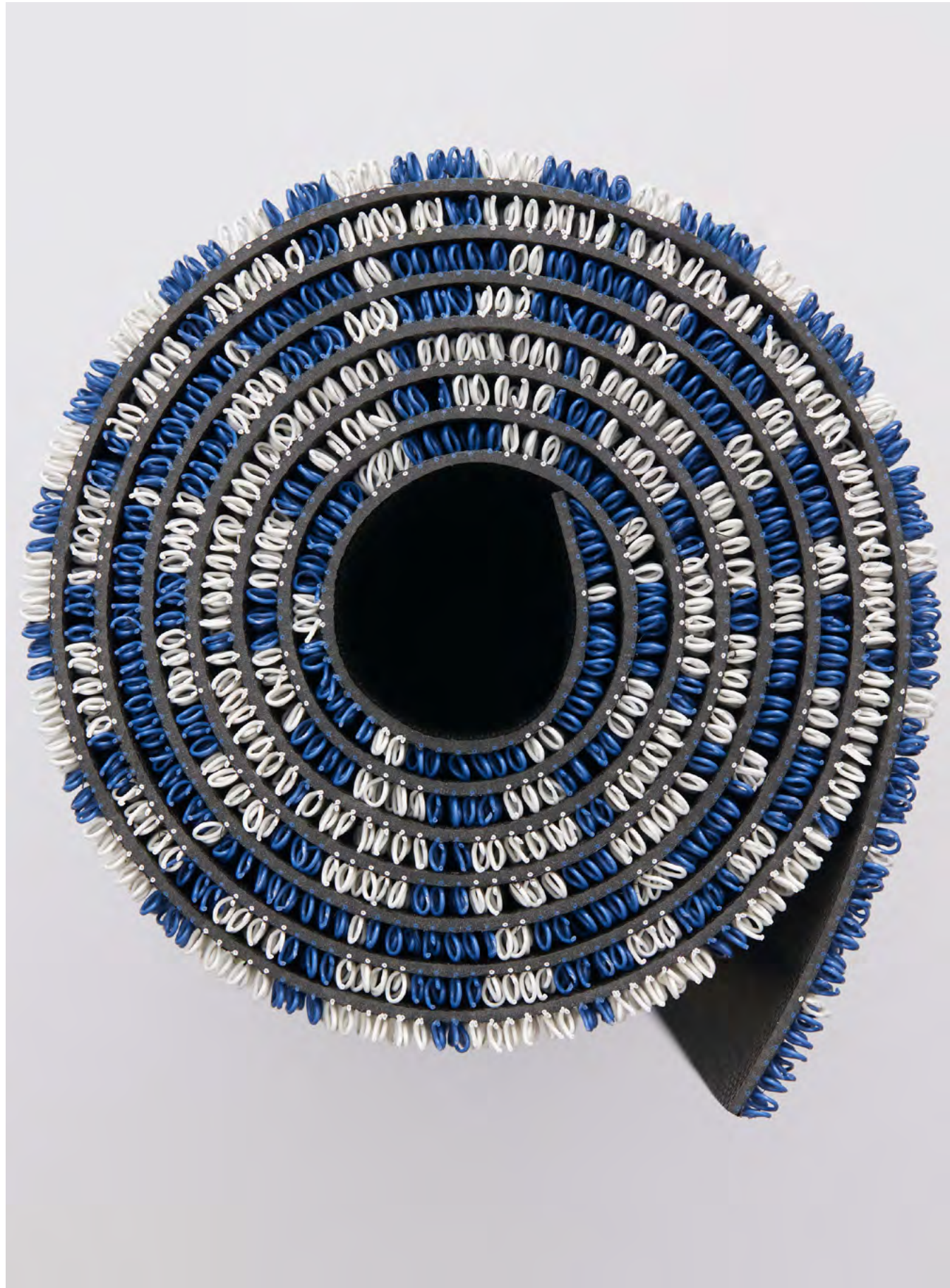





Domino in Denim

True blue at its most dynamic.







Designed to inspire. Made to last.

Founded in 2000, Chilewich pushes the boundaries of form and function through products that combine innovative textiles and distinctive colors with extraordinary durability and easy maintenance. Our designs can be found in the permanent collection of the Cooper Hewitt, Smithsonian Design Museum, and in homes, workplaces, restaurants, hotels, and vehicles around the world.

Stay in the loop.

Learn about our latest weaves, design debuts, special events, and more at chilewich.com, and keep in touch with our textures by following us on Instagram at [@chilewich](https://www.instagram.com/chilewich).

Chilewich | Sultan LLC
39 West 19th Street
New York, NY 10011

Chilewich® and TerraStrand®
are registered trademarks.
All rights reserved.

Photography: Robert Mandolene, Megan Senior.

chilewich®